



The Royal Wolverhampton
NHS Trust Charity
Registered Charity No. 1059467



The Royal Wolverhampton
NHS Trust

Charity Annual Report and Accounts 2023/24



Introduction

• Foreword – message from our Chair	Page 3
• About The Royal Wolverhampton NHS Trust Charity	4-5
• Financial Review	6-7
• Annual Summary	8-9

Our work

• Fundraising and working within our community	10-19
• Arts and Heritage	20-22
• Legacies	23
• Corporate and External Donations	24-30
• Volunteering at RWT	31-33
• Events	34-42
• Grants	43-45
• Spend	46-47
• How you can support us	48
• Looking Ahead	49

Finance

• Trustees Custodians of the Charity	50-61
• Statement of Trustees' responsibilities	62
• Independent Auditors report	63-65
• Charity Accounts 2023/24	66-80



The Royal Wolverhampton
NHS Trust Charity

Message from our Chair Prof Martin Levermore DL



Having been the Chair of the Royal Wolverhampton Trust Charity for the past 12 months, I am delighted to present the 2023/24 Annual Report. This also gives me the opportunity to be a little reflective on the importance of volunteers against the backdrop of falling numbers nationally.

Only recently, the Charity Retail Association stated that “volunteer numbers have dropped from 230,000 to 186,000”, the Independent Food Aid Network commented that “foodbanks were critically short”, and the Scouts movement reported that it had a waiting list of 90,000 young people that it could not enlist due to a fall in adult volunteers.

The government’s quote last April that “the numbers of volunteers were falling relentlessly downhill reaching an historic low” is not hard to understand – many older volunteers have not returned after the COVID-19 pandemic and, of course, the cost-of-living crisis makes it difficult for younger volunteers.

Volunteers play a vital role in the success of charities, especially in the current climate where we are faced with challenges such as budget constraints, increased demand for services, and the need to adapt to rapidly changing circumstances. The value of our volunteers cannot be overstated as they bring dedication, diverse skills, and a genuine passion for making a difference to the causes they support. As such, I am deeply grateful to all those involved in the Royal Wolverhampton Trust Charity’s retention of our volunteers and humbled by the spirit and selfless commitment of our volunteers. Everything we can do to support our ‘unsung heroes’ should be very much at the top of our ambitions.

The Royal Wolverhampton Trust Charity holds a special place within our community. It plays a crucial role in supporting and enhancing the services provided by the Trust through fundraising, donations, and community engagement. I am also proud of the connections and partnerships the charity is achieving to raise awareness about healthcare issues and the importance of charitable giving to support our services. The work of our staff and volunteers in community engagement helps to build a true sense of collective responsibility for healthcare provision in our region.

By raising funds and awareness, the Royal Wolverhampton NHS Trust Charity directly impacts the quality of healthcare services provided by the Trust. This support goes a long way to improving patient outcomes, enhancing the patient experience, and contributing to the overall wellbeing of our community.

The need for continued support is paramount. Given the ongoing public health challenges and the increasing strain on our local healthcare system, the work of the Charity is more important than ever. This is evidenced by the support of a wide range of projects across many departments and directorates, many of which are highlighted in the body of this report.

Looking ahead, our Charity must strive further to assist in the understanding of the mechanisms of early disease development and progression within our local population, to support the development of new detection and therapeutic interventions aimed at the earlier disease course. Importantly, this is to support innovative projects and programmes within the Trust, which foster a culture of continuous improvement and development in healthcare services. The outcome should lead to the implementation of cutting-edge technologies, research initiatives, and best practices that benefit our patients and staff.

I want to thank all those involved and those supporters of the Charity. We are so deeply grateful to all of you. A special thanks also goes to Professor David Loughton CBE, upon his retirement, for his many years of service to the NHS and to the Royal Wolverhampton NHS Trust Charity.

Mlevermore

Martin Levermore
Chair of the Charitable Funds Committee



About The Royal Wolverhampton NHS Trust Charity

The Royal Wolverhampton NHS Trust Charity is dedicated to improving experience and outcomes for our patients, staff and local community. The Trust's people and patients are at the heart of what we do.

Our mission is to enhance patient care and help families and carers in Wolverhampton by transforming hospital and community-based services. We do this through funding "added extras" - items, projects, research, staff training and services – that are over and above those provided by the NHS. This is what drives our Charity, inspires our fundraisers, and connects us to Wolverhampton's warm, friendly, and diverse population.

We work alongside the Trust, raising funds to support our staff to deliver the very best possible care and to help adults and children across Wolverhampton and surrounding areas. With the help of our wonderful community, our fundraising efforts make a real difference to patient outcomes.

Whether people come to hospital for routine procedures, medical investigations, or for life-saving, cutting edge treatment, we understand that needing NHS care can be a worrying time. Every day the fundraising of the Royal Wolverhampton NHS Trust Charity helps to ensure that visits to our hospitals and our services are as comfortable, reassuring, friendly and positive as possible

Trust Overview

The Royal Wolverhampton NHS Trust is one of the largest healthcare providers in the Black Country and West Midlands, providing primary, secondary, community and tertiary care services to a combined population of 450,000 people. The Trust provides 850 beds at its New Cross Hospital site (including Intensive Care beds and Neonatal cots), 56 rehabilitation beds at West Park Hospital, and 54 beds at Cannock Chase Hospital. It is the largest employer in Wolverhampton, with more than 10,500 staff. This means that the charity supports in the region of 460,500 beneficiaries year on year.

The Trust provides services in the following locations:

- Cannock Chase Hospital - General Surgery, Orthopaedics, Breast Surgery, Urology, Dermatology, Medical Day Case investigations and treatment (including Neurology and Endoscopy) Inpatient rehabilitation beds.
- Community Services - More than 20 community sites providing services for children and adults, Walk-in Centres, and Therapy and Rehabilitation services.
- Primary Care - Nine GP practices.
- New Cross Hospital - Secondary and tertiary services, Maternity, Accident & Emergency, Critical Care and Outpatients.
- West Park Hospital - Rehabilitation, Inpatient and Day Care services, Therapy services and Outpatients.

The Trust also successfully hosts Black Country Pathology Services (BCPS) and the West Midlands Local Clinical Research Network (WMCRN), and has done since its establishment in April 2014.

The Trustees' Mission

The mission of the charity is to make a real difference to the patients of The Royal Wolverhampton NHS Trust, their families and the staff that treat them, above and beyond that provided by the NHS. We support the Trust to realise its vision to be an NHS organisation that continually strives to improve the outcomes and experiences for the communities it serves.

Public Benefit

In planning the Charity's activities, careful consideration is given to the Charity Commission's public benefit guidance. We must also comply with the duty in Section 4 of the Charities Act 2011. We support the work of the Trust, however, there is a clear distinction between what the Trust is required to provide as an NHS organisation and what is additional public benefit. The application of charitable funds leads to the enhancement of patient care and experience – regardless of our patients' backgrounds or personal circumstances.

Charity funds are used to provide the following:

- Additional facilities to enhance the healing environment
- Additional equipment to enhance patient care and experiences
- Opportunities for additional staff training, above and beyond mandatory training
- Opportunities for further medical knowledge through research.

Getting involved and supporting your local hospital and patients of the Trust couldn't be easier. Simply call the Fundraising Team on 01902 694473 or contact us on social media –



@TheRWTCCharity



@therwtcharity



@therwtcharity



Financial review

The Statement of Financial Activities can be found below as at 31 March 2024, with comparatives to the previous year. The complete set of Accounts can be found on pages 66-80.

Income
£817k

Total Incoming Resources	Unrestricted £000	Restricted £000
Donations and Legacies - £429k	290	139
Grants - £186k	-	186
Fundraising - £94k	87	7
Investment income - £108k	62	46
Total - £817k	439	378

Statement of Financial Activities

	Unrestricted £000	Restricted £000	Endowment £000	2023/24 £000	2022/23 £000
Total incoming resources	439	378	-	817	881
Total expenditure	(616)	(225)	-	(841)	(944)
Net gains/(losses) on investment	84	37	-	121	(243)
Net income/ (expenditure)	(93)	190	-	97	(306)
Transfer between funds	252	(252)	-	-	-
Total brought forward	1,791	852	82	2,725	3,031
Total at 31 March 2024	1,950	790	82	2,822	2,725

	Unrestricted £000	Restricted £000
Raising funds - (£210k)	(183)	(27)
Charitable activities - (£629k)	(431)	(198)
Other expenditure - (£2k)	(2)	-
Total - (£841k)	(616)	(225)

Expenditure
£841k

Did you know you can also increase your donation without having to pay more?

Included in the Donations and Legacies and Fundraising income above, is an additional £10k which has been raised through the Gift Aid scheme in 2023/24.



How does Gift Aid work?

Gift Aid is a scheme run by the government that enables charities to increase the value of donations made by reclaiming basic rate tax that has been paid on the gift. We can claim 25p per £1 donated, so on a gift of £100, we will actually receive an extra £25, at no cost to the donor.

The Balance Sheet as at 31 March 2024 can be found below with the comparatives to the previous year.

Balance Sheet

	2023/24 £000	2022/23 £000		2023/24 £000	2022/23 £000
Fixed Asset Investments	2,571	2,449	Endowment funds	82	82
Debtors & Prepayments	50	45	Restricted funds	790	852
Cash	372	390	Unrestricted funds		
Creditors	(171)	(160)	- Designated	1,604	1,705
Net Assets	2,822	2,725	- Non-designated	346	86
			Total Funds	2,822	2,725

A few helpful definitions:

Throughout this report you may see some terminology you aren't familiar with. Hopefully these next few paragraphs will help you understand the Charity's financial position.

Fixed asset investments - investments held in Shorter (low risk) or Longer (higher risk) Term Investment Portfolios.

Current assets - cash held plus debtors. Debtors - money paid in after the year end relating to the year, accrued income - money due in for activities taken place in the year. Prepayments - payments made in year relating to the next year and so have been removed from the Statement of Financial Activities expenditure.

Current liabilities - creditors falling due within one year for money owed to others for expenses chargeable in the year.

Liabilities - creditors falling due after more than one year for money owed to others for expenses chargeable for previous years.

Net assets - Total assets minus total liabilities.

Endowment funds - represent funds that are held as capital in perpetuity so that only the income is available for distribution.

Restricted income funds - represent money which is held by the Trustees which can only be used for specified purposes. These funds are supervised either by the Fund Advisors within the ward, department or specialty concerned or the Group Chief Executive and Group Chief Financial Officer for more generic purposes.

Unrestricted income funds - funds available to be spent within the objects of the Charity which can legally be spent wholly at the discretion of the Trustees. In practice, respecting the non-binding preferences expressed by donors, the Trustees have sub categorised the unrestricted income funds under two headings.

- **Designated (earmarked) funds** - separate funds which the Trustees have created to accord with sections 90 and 91 of the National Health Service Act 1977 which require that the Trustees respect, as far as practicable, the specific intentions of the gifts received through wards, departments and specialties. By designating funds the Trustees ensure that those gifts are channelled towards charitable purposes in those areas. These funds are supervised by Fund Advisors from the wards, departments and specialties concerned.
- **Non-designated funds (general/reserves)** - represent those funds available for distribution by the Trustees at their discretion which have not been restricted or earmarked and can be used as reserves should the need arise. These funds are supervised by the Group Chief Executive and Group Chief Financial Officer.

Annual summary

Our Impact

The last year has been very different to the previous 12 months for various reasons - with the main one being the impact of the cost-of-living crisis. Fundraisers have been able to participate in events again which is great news, but sadly people have also found times hard physically, emotionally, and financially. They may have lost loved ones through COVID-19 or been impacted by long COVID and jobs have been at risk from the effects of the cost-of-living crisis. Not only has this impacted our fundraisers but our patients and staff too, with many struggling in the current climate.

Below are just a few recent examples of the many ways donations have allowed us to make a significant impact. For patient comfort and welfare, we provided:

- Refurbishment of patient day rooms
- Specialist chairs (including a stroke treatment chair) for the Neuro Rehab Unit at West Park Hospital
- Funding for a specialist welfare rights officer to help renal disease patients manage loss of income
- Picnic tables across the Trust to allow patients and their families to get outside for some fresh air
- Wig caps, liners and head scarves for patients who have lost their hair due to cancer treatment

We bought lifesaving and state of the art equipment including:

- A Video Laryngoscope to help with the effective intubation of extremely pre-term babies
- A special Ultrasound machine to reduce the risk of complications for cardiac patients
- An NGENUITY® 3D Visualisation System so retinal surgeons can operate looking at a high-definition 3D screen, instead of bending to look through the eyepiece of a microscope

We supported staff training and welfare through:

- Training sessions in Deafness Awareness and basic BSL Signing for hospital staff
- Mindfulness and meditation sessions to help staff better manage on the job anxiety and stress

We have been able to support patients and staff over the last 12 months with the following to offer support and comfort to those who find themselves in hospital and for those looking after them:

- Staff Wellbeing Hub supporting families with free breakfast and access to essential food items

- Patients and staff Christmas presents to help bring some joy to those in hospital over the festive period, whether being cared for or providing the care
- Launched Garden Appeal to transform outdoor space to support our young patients' recovery
- Activity packs for patients with dementia
- Toys for Paediatric patients across the Trust
- Arts and crafts activities for patients on the Neuro Rehab Unit
- Chemotherapy packs for patients starting treatment in the Deanesly Unit
- Water bottles for patients undergoing radiotherapy
- Surgical loupes for cardiac surgery
- Singing Medicine therapy on our Children's Ward
- Art murals welcoming our youngest patients and putting them at ease

Aim

The Charity actively supports projects that enhance the delivery and experience of care for all patients and their families. This includes the provision of additional equipment or equipment that is of a higher specification than NHS funding can provide. It funds projects that enhance the healing environment and provides funding for additional training and any other resources that will help make a real difference.

We are grateful for all the support we receive, however, we have further aspirations that require us to be ambitious in our income generation activities. We will strive to increase the value of monetary and non-monetary donations we receive year upon year.

We will support our NHS colleagues' commitment to ensuring everyone has equal access to our services, saving lives and improving health outcomes for our diverse community with a key focus on:

- Staff wellbeing
- Improving the patient experience
- Opportunities to further medical knowledge through research
- Engaging with our local community
- Developing partnerships
- Tackling health inequalities

Owing to the exceptional circumstances and the uncertainty of the current environment, this strategy intentionally focuses on the strategic direction for a shorter timeframe than usual - the 2022/23 and 2023/24 financial years. We are now working on the new Fundraising Strategy for the next two years, which allows us to monitor the environment and review accordingly in line with the cost-of-living crisis.



Our work

Family raises money for ICCU

A grateful family were so impressed with the care their loved one received before her death they raised £2,350 for Wolverhampton's intensive care Nurses and patients – from a 10th anniversary celebration of her life.

Lauren Cole, Community Sister in Planned Care for East Team for The Royal Wolverhampton NHS Trust (RWT), organised a fundraiser on behalf of her late mum Penny Cole, with dad Paul Cole and brother Sam Cole.



Sam Cole, Lauren Cole, Paul Cole and Gerardine Hardisty

Penny, 56, died after suffering a cardiac arrest on her way to work at Halifax Bank in Wolverhampton City Centre. She was taken to the Integrated Critical Care Unit (ICCU) at New Cross Hospital but suffered another arrest and died on 14 December 2013 after spending four days on ICCU.

Her family held a celebration event at Pattingham Village Hall to mark the 10th anniversary of Penny's passing with friends and family with cakes, tea and a raffle, with donations for all invited. They decided to hold the event at a significant time of year for the family, as Penny and her own mum Sheila Edmead shared the same birthday – Sheila was 93 on the week of the celebration.

"We wanted to do something to celebrate mum's life, then we thought we could raise some money and the ICCU is such a good cause," said Lauren.

"We ran a few competitions to raise money such as guess the number of sweets in a jar and name the teddy elephant, and some of Penny's friends who now live in New Zealand also sent donations. I see the ICCU Nurses as the elite of the elite – they have so much compassion for the job. They are in a different league, they are just so fantastic."



"I only thought we'd raise £100 but we received £1,120 on the day and Sam's work (Lloyds Bank) matched some of the funds raised, meaning the amount came to £2,350."

Gerardine Hardisty, Matron for ICCU, said: "We really appreciate this very kind, thoughtful and generous gesture by Lauren and her family. We are very humbled. We will use this money for future training and development of our staff to enhance our patient care."

Amanda Winwood, The RWT Charity Development Manager, said: "What Lauren's family have done to support our intensive care Nurses is lovely, especially given their losses. The Intensive Care will put this to good use."

Heart patient makes second charity donation



A retired bookmaker who says he owes his life to a Wolverhampton Consultant has made a second charitable donation to the unit where he was treated – totalling almost £3,000 to date.

Graham Ellis made his first donation of £1,420 to the Cardiothoracic Trust Fund at New Cross Hospital in 2022, badging it as a "thank you" for the care he'd received while having a defibrillator fitted. His ill health started with a heart attack while on holiday in Thailand, at which point Graham returned to the UK

and received life-saving support from staff at RWT. He has since had two other procedures, following the original operation to fit the defibrillator, to fit stents in weakened arteries and improve blood flow.

"I owe Mr Petkar (Sanjiv Petkar, Consultant Electrophysiologist at RWT) my life and that's why we decided to host another fundraiser," said Graham. "It was good to be back at the Heart and Lung Centre to present him with this money. It's our way of recognising the efforts of him, and all the Cardiology staff, and to support patients like myself who are in need of treatment."

Money was raised by 30 golfers playing in a four-ball tournament at Chesterton Valley Golf Club, near Bridgnorth, with a special auction at the end of the night which saw guests bag themselves treats such as meals at The Plough Inn in Claverley and vouchers for games of mini-golf. The tournament raised £800 in total, while two raffles held at Rudge Heath Stores, on the Wolverhampton Road, raised around a further £600. Raffle and auction prizes were generously donated from local businesses including Putt Putt Noodle in Telford and The Inn at Shipley in Wolverhampton.

The cheque presentation was organised through The RWT Charity which met with Graham and Eldon Foster – friend of 30 years and owner of Rudge Heath Stores – alongside Mr Petkar.

Mr Petkar said: "We are very thankful for this donation and grateful that Graham has considered us here at RWT. I'm pleased to hear that he feels good in himself too, and that he felt well enough to travel back to Thailand earlier this year."

Amie Rogers, Fundraising and Lead Digital Engagement Officer, added: "It was so lovely to see Graham again and to accept yet another kind donation. We thank him, and Eldon, for their efforts – the funds will be used for the benefit of our patients."

Mum goes on the run - twice

A mum whose poorly daughter was treated in Wolverhampton's Neonatal Unit went on the run twice to raise around £1,500 for a garden appeal to help young patients.

Aimee Guy ran the Stafford Half Marathon followed by the Wolverhampton 10k in successive weekends.



She swelled the funds of the £30,000 appeal the RWT Charity has set up to renovate its garden in the Children's Ward at New Cross Hospital.

Olivia Guy, the young daughter of Aimee and husband Jason has 1p36 deletion syndrome, a disorder that typically causes severe intellectual disability. She spent six weeks on the Neonatal Unit at New Cross Hospital from October 2020.

Both Aimee and serial fundraiser Jason were keen to boost the appeal and he kickstarted it by raising more than £9,200 when he and former footballer Neil "Razor" Ruddock had Millwall and Wolves tattoos recently.

Mum of four Aimee ran up to 35 miles a week preparing for the two events, which she completed with friend Emma Bernard – and Jason in the latter.

The pair completed their challenge in style, with both setting personal bests in the 10k. Aimee clocked 51 minutes, 37 seconds and Emma crossed the line in 51.03 in the event, which starts and finishes at Wolves' Molineux Stadium.

Reflecting on the 10k race, Aimee, who is a full-time carer for Olivia and part-time recruitment consultant for Staff4Today, said: "We did start together but Emma was definitely quicker than me, although I made a bit up on the sprint finish.

"Jason did really well too – he ran one hour 11 minutes, so he went faster than he thought. But the main winner is the charity and boosting the fund."

In the half marathon, Aimee had mixed feelings – she managed a new personal best shaving a few seconds off her previous personal best of 2:01 but finished just 45 seconds over the two-hour mark. Emma came home in 2:03, a new best by 12 minutes.

“I missed my ‘goal’ time by 45 seconds but even though my training takes me on hills around Wolverhampton, I massively underestimated the hills in Stafford – a couple of big hills felt like they were never-ending,” said Aimee.

Amanda Winwood, The RWT Charity Development Manager, said: “Well done Aimee and Emma and we’re really grateful for the Guy family’s continued support for this project.

“Their donations will benefit thousands of patients and their families going forward by giving them a space to play and relax during a difficult time.”

Lego car win leads to £2,000 fundraiser for garden appeal

A raffle win of a Lego car drove a £2,000 donation to help leukaemia patients.



From left, Amy Athwal, Children’s Community Nursing Sister, Stephanie Friedl, Paediatric Oncology Clinical Nurse Specialist, Elliott McNaughton, Jon McNaughton and Dr. Julie Brent, Paediatrician, following Elliott’s favourite dinosaur impression!

Jon McNaughton, whose son Elliott has leukaemia, won an adult Lego car in a competition on LinkedIn hosted by one of the assembly technician’s suppliers Rebound Electronics.

Instead of claiming the prize, Jon put it on eBay to raise money for The RWT Charity.

The Trust has cared for the three year old, who was diagnosed with Acute Lymphoblastic Leukaemia (ALL) in June 2022. This is where cancerous cells build up in the bone marrow, until eventually there’s no room for normal blood cells to be made there.

Rebound Electronics set up a crowdfunder to raise money for the Paediatric department at RWT and its £500 target soon hit £1,000. The Dubai-based company generously match funded the pot to double the total to £2,000. It also donated tickets to ‘Brick Fest Live’ for the family, an exhibition of a million bricks at the NEC, and a Lego voucher for Elliott.

Jon said: “Rebound don’t really know me so for the staff to do what they have is incredible. Elliott is our only child. It was a huge shock when he was diagnosed and it’s been a long journey with plenty of highs and lows.

“He completed a six to seven-month intense course of chemotherapy and other treatment and is now on the ‘maintenance’ stage. He still has daily and monthly chemo and steroids but this is less intense than the first stage. He has a pretty good long-term prognosis and he started pre-school in September. If he has a cold or high temperature, however, he has to stay in hospital for 24-48 hours as he is more vulnerable to infections.”

Elliott has been treated at Birmingham Children’s Hospital, particularly following his diagnosis, although the majority has been at the family’s local hospital, New Cross in Wolverhampton.

Rebound said in a statement: “Thank you to everyone who has donated. We understand the money will go towards plans to upgrade the outdoor space for the children, so this will go a long way to helping to achieve this.”

Amanda Winwood, The RWT Charity Development Manager, and Amie Rogers, its Fundraising and Lead Digital Officer, met Jon and Elliott at a follow-up appointment with Dr Julie Brent.

Dr Brent, Paediatrician, said: “Patients with leukaemia are often with us for lengthy stays, so it is important to give them a change of scenery and to play, which is part of their rehabilitation.”

Amanda said: “We are so grateful for this donation. We’ve been overwhelmed at the support to improve the outdoor space.”

Fab four's marathon success

Wolverhampton NHS colleagues raised more than £3000 to improve patients' experience after taking on a half marathon.



Brothers Deepak and Pardeep Chand, Suzanne Giles and Michelle Wilding took part in the London Landmarks Half Marathon (LLHM) after securing places via The Royal Wolverhampton NHS Trust (RWT) Charity.

Along with almost 19,000 other runners, they set off on the 13.1-mile (21km) course, which took in sightseer favourites including Big Ben, St Paul's Cathedral and Trafalgar Square.

The fab four took on the challenge on Sunday 7 April and were all thrilled to have completed the course.

Deepak Chand, Directorate Manager Cardiology said: "It was an amazing experience and very fulfilling after so much training. I enjoyed the crowds and atmosphere.

"I would say the most difficult thing about the marathon was running whilst feeling unwell, I was struggling from mile one. I feel happy to have raised money for The RWT Charity and that it will support those most in need and improve our services."

Pardeep Chand said: "Completing a half marathon for the first ever time has given me confidence to try for another knowing I'm capable of doing anything if I put my mind to it.

"I enjoyed seeing my older brother pushing me to go faster and the mile-long crowds cheering was a massive confidence booster. The most difficult thing about the marathon was knowing I had another 10 miles to go after completing three. I feel great knowing that the money I raised will help and change someone's life somewhere along the line."

For Suzanne Giles, Staff Nurse (Adult), this was her first half marathon.

She said: "It was very emotional as I had trained very hard and didn't quite know what to expect. I felt exhilarated at the end.

"There was plenty to see around London; each landmark was another mile and there were plenty of choir's drums to keep me energised. The crowds and the marshalls were there to shout your name if I was flagging and plenty of water and jelly babies provided throughout. It was such an honour to raise monies for RWT Charity to support patients, relatives and staff who need it."

Michelle Wilding, Senior Sister, said: "Running the LLHM was an amazing experience!

"At the start, I remember feeling so nervous as it was my first half marathon experience and I did not know what to expect. But once I started running, the support of the crowds and all the entertainment along the way made it so enjoyable.

"The last three miles were the toughest as I felt so tired at this point, but the supporters gave me the incentive to carry on. The sense of achievement I felt when I crossed that finish line was amazing and made it all worth it. The money we have raised for RWT Charity is an unbelievable amount and knowing it is going to such a special charity makes it all worth the hard work and I can't wait to take part in future events to raise even more."

Amie Rogers, Fundraising and Lead Digital Engagement Officer, said: "Our colleagues did so well – we're proud of their achievement and grateful for all the money they have raised for The Charity.

"The money raised will help provide for things over and above what the NHS is able to provide."

Amber nets a near £1,500 for charity

A courageous Nurse who suffered life-threatening injuries in a near fatal car crash has raised almost £1,500 for Wolverhampton's West Park Rehabilitation Hospital.



Cheque being presented to staff from West Park Rehabilitation Hospital, from left: Kay Millincamp, Aileen Brabazon, Dr Clare Rose, Emma Eason, Amber Sorsby, Jayne Sorsby and Jenni Nasioki

Amber Sorsby, Paediatric Staff Nurse, raised £1,495 from a netball tournament to donate to the garden linked to the Neuro Rehabilitation Unit at West Park. The donation was in recognition of the care she received after spending 53 days on the unit following a traumatic brain injury in a near-fatal car accident involving a drunk driver.

Amber was put into a coma in her car before undergoing life-saving surgery in hospital after suffering a shattered spleen, a lacerated liver and kidney and a severe brain injury caused by a bleed. She had two and a half litres of blood in her abdomen and also suffered multiple fractures, to her lower spine, a broken pelvis in five places, broken ribs, collarbones, collapsed lungs and a fractured skull in the accident in March 2018. The driver of the car was sentenced to two years in prison after causing serious injury through dangerous driving. Amber spent two months in hospital in Stoke before being transferred to West Park for two months.

Having played netball since she was 15 before going on to coach and umpire the sport, a netball tournament seemed to be the obvious thing to do as a fundraiser. The Stafford & District Netball League organised it at Stafford Manor High School.

Fifteen teams made up of her old Stafford team-mates and friends played seven-minute games, with Allsorts beating Midrange in the final.

"I would like the funds to go towards the garden at West Park, because the time I spent in there was very valuable and important to my recovery," said Amber, who has recently returned to playing netball and plays in the Stafford League division one for Violets with her mum and sister.

"I thank the entire Nursing and medical team who looked after me. I received input from Nurses, Doctors, Occupational Therapists, Physiotherapists, Speech and Language Therapists and Psychologists, and the care I received was excellent and has helped me get my life back. It's hard to say I've made a full recovery as I'll never be the same again but I'd say I'm 85 per cent back to the person I was."

Amanda Winwood, The RWT Charity's Development Manager, said: "Amber has shown tremendous courage and determination to recover from her injuries. "She has carried that spirit through to her fundraising and we really appreciate her organising this tournament to raise the funds for the garden at West Park. Other patients will now benefit from this in their rehabilitation."

PCN fundraises for Trust's Dementia Unit

A fundraising event to raise awareness brought in a grand total of £1,843 for RWT's Dementia Unit.



The Warstones Surgery team that helped make the fundraising event possible (left to right): Hayleigh Griffiths, Judith Norman, Karen Gee, Lisa Burke, Dr Koodaruth and Nawaaf Koodaruth

Members of the public were invited to Warstones Surgery to take part in a range of fun activities to help raise money for the worthy cause.

The event saw an array of delicious homemade and shop-bought cakes and samosas alongside craft stalls, raffles and local business stands, with staff volunteering their time at the weekend to encourage donations.



Hayleigh Griffiths, Assistant Practice Manager at Warstones Surgery, said: "Dementia is very close to our hearts here at the practice, whether it has affected family members or our very own patients, we wanted to try and make a difference to the care and treatment they receive.

"We would also like to say a huge thank you to all of the local companies that donated raffle prizes and refreshments as well as those who donated on the day."

Money raised will contribute to enhancing the experiences of patients and their families within the Dementia Unit at New Cross Hospital via The RWT Charity.

Amanda Winwood, RWT Charity Development Manager, added: "Thank you to Warstones Surgery colleagues for putting on such a successful event, and giving up their own time to support it. They raised a fantastic amount which will be used to make a difference to our patients."



All smiles on the Festive Mile!

Rain failed to dampen the spirits of fundraisers who joined Father Christmas and The Grinch to take part in RWT Charity's Festive Mile. Staff from across the Trust donned Santa hats – and many wore their favourite Christmas jumpers – to take part and boost funds to enhance the experience of patients using healthcare services. And their efforts brought in an amazing £175. The event was also important for health and wellbeing and gave hard-working staff a chance for some fresh air and exercise, despite the wind and rain.

David Law, Head of Knowledge Services, and Josh Brazier, Knowledge Services Assistant, were among those who took part. "We're pleased to support The Charity and aren't put off by a bit of rain!" said David.

Bal Chanion joined colleagues from Finance and said: "It's always good to help other people and as a team it's nice to do something together too."



Father Christmas was his usually jolly self, encouraging walkers along the way but he was joined by a very mischievous cyclist. The Grinch, AKA Adam Billington, Creative Director of Gatis Community Centre, joined in on his bike, playing the part of the cynical character created by Dr Seuss to perfection.

"I'm not dis-similar to The Grinch as I can be a bit bah humbug, but I had a great time playing him on the Festive Mile," said Adam.

The father of three is a grateful former patient after having open heart surgery at New Cross Hospital.

"Our centre is involved with The Charity through its knitting group, but this was my first time of being involved and I really wanted to give something back for the care I received," he said.

Amie Rogers, Fundraising and Lead Digital Engagement Officer, said The Charity was thrilled to see so many supportive staff in such poor weather.

“Considering they had wind and rain to contend with, everyone taking part did so in good spirits and we’d like to thank them for turning out for the fundraiser,” she said.

“A special thank you to Santa and The Grinch too for proving to be such brilliant company on the Festive Mile.”

Santa Claus came to town early

Santa Claus stopped by New Cross Hospital’s Paediatric Ward to bring cheer to patients, relatives, and staff ahead of Christmas.

Although Santa was busy preparing gifts in the North Pole, he took some time off, joined by his naughty elf, who helped him give out gifts to the youngsters in hospital.



Lucas Lisseman was one of the first patients to receive a gift from Santa and was delighted with his chocolate selection box.

Sue Halstead, Lucas’s mother, said: “He was delighted to receive a gift from Santa, especially after being in hospital for nearly a week. It has brought us cheer and made his Christmas.

“Lucas would really like a camera, so he asked Santa if he was on the nice list!”

Santa spent time talking to the children on the ward and giving out gifts.

He said: “It is great to be here at New Cross Hospital spreading some Christmas cheer.”

Molly Lockley, Play Leader at RWT, said: “It’s great to have Santa here and see the smiles on children’s faces. It makes their journey in hospital less scary and something to look forward to.”



Estate agent's £5,000 donation for children

Christmas came early for sick children in Wolverhampton after a generous estate agent donated £5,000.

Royston & Lund, which has an office on Penn Road, raised £2,500 from a JustGiving page and matched it, with £2,042.33 worth of gifts going to the Children’s Ward at New Cross Hospital.

The remaining amount of £2,957.67 was donated to renovate the children’s garden on Ward A21. The company bought presents for children staying in hospital over the festive period and gifts were varied so all age groups were covered. They included knitted items for babies and toddlers, and colouring books and toiletries for older children, with the remaining amount to renovate the children’s garden on Ward A21.

“I couldn’t be happier that we were able to positively impact the community,” said Monica Basra, Royston & Lund Lettings Manager.



"These children may be facing challenging health issues, but Christmas magic can offer them strength, hope, and a much-needed diversion. Giving gifts to a children's ward not only makes the young patients happier, but it also provides consolation and support to their families. We took into account a number of variables when selecting gifts, including practicality, educational value, age appropriateness for their development, and interests that matched potential activities."

Amanda Winwood, RWT Charity Development Manager, received and distributed the gifts. She said: "This really is a huge donation and we're so grateful and thankful to Royston & Lund. This will make a massive difference to our younger patients at a challenging time for them."

Gifts for patients thanks to caring staff

More than 170 gift bags were delivered to patients staying in hospital at Christmas thanks to the generous donations of Wolverhampton NHS staff.

Lisa Bristow, Ward Waitress at New Cross Hospital, gathered the gifts after asking colleagues in Catering, Portering, Radiology, Cancer Services and Domestic to help spread some seasonal cheer.



She got the idea after working at the Wednesfield and Wood End Royal British Legion Club last year.

She said: "The club donated gifts to The Haven Wolverhampton last year and they were so well received. I thought it would be a good idea to do a similar thing for the patients in hospital over Christmas.

"I went round the hospital and left collection boxes for staff to donate. When I went to collect them, I was overwhelmed by how generous staff had been. I didn't expect it. They donated mug sets, bath and

body sets as well as individual items so we could make up gift bags with them."

Having worked for the Trust for 19 years Lisa has done her fair share of working on Christmas day.

She said: "I know it can be tough for people in hospital over Christmas – especially those without family. If the gifts can bring a smile to those who need it most then I will be happy that we have done a good job. Even though we all try hard to make it better for our patients, it is tough being in hospital and you are normally at your lowest."

Amie Rogers, Fundraising and Lead Digital Engagement Officer at The RWT Charity, said: "We are so grateful to Lisa and her colleagues for the thoughtful and generous gifts. It's lovely that she wanted to do something for our patients to lift their spirits. Christmas can be an incredibly difficult time for some people – especially those in hospital."

Jess sews seeds of comfort for patients

An award-winning volunteer at New Cross Hospital is using her creative flair to make life more comfortable for patients living with dementia – hopefully leading to a career in healthcare.



Jess (red hair) with some of the items she has made, with clockwise, from left: Dawn Southey, Senior Advanced Nurse Practitioner and Dementia Lead, Donna Cattell, Healthcare Assistant, and Ashleigh Key, Volunteer Coordinator, holding a blanket

Jess James-Causar, is a clinical volunteer on Ward C56 Same Day Emergency Care (SDEC) Frailty. She has been sewing bells, ribbons, buttons, beads, zippers and pom-poms to twiddle muffs and blankets, as well as making holes for patients to put their fingers through. Patients find the woollen items have a calming effect on them.

It's a real family affair too as Jess's mum Zara James and her sister Brodi-Sue James-Causar knit blankets and crochet the items ready for Jess to work her magic.

"I spoke to one of the Dementia Nurses, Donna Cattell, and asked what the patients like to do and she told me about the twiddle muffs," said Jess, who has been volunteering since January 2023.

"My mum started crocheting for something to do before lockdown and now she can do it without looking, it's like muscle memory. Brodi asked if she could help out and she crochets the twiddle muffs too. We let patients take them home once we've given them out – it's something positive to remember their hospital stay by, and it makes them happy because they can get quite agitated. The twiddle muffs have a calming effect which makes people's jobs easier."

Jess is a real convert to volunteering and also supports the Staff and Wellbeing Hub and Ward A31 Ophthalmology at New Cross Hospital. The Patient Experience Volunteer Service nominated Jess for the Rising Star Award, along with other staff on the ward, and the lifelong Wolves fan was awarded at the joint RWT Charity and Volunteer Awards at Molineux.

Since August she has also been part of the arts and heritage programme at West Park Hospital, helping patients use their time by engaging creatively by painting birdhouses.

Jess, who is currently studying for a level 3 diploma in health and social care at City of Wolverhampton College, said: "I used to see my neighbour going to work at New Cross Hospital and always thought I wanted to work in a hospital setting and help people. Gradually I've wanted to look into the possibility of working in Speech and Language Therapy or special educational needs in adults. We lived with my grandad, and my mum, who cared for my great nan who had dementia, has given me tips and ideas."

Ashleigh Key, Volunteer Co-ordinator, said: "We are so proud of everything Jess does. She is an asset to our Volunteer Service and goes above and beyond to support our staff and improve patient experience. Well done Jess!"

Dawn Southey, Senior Advanced Nurse Practitioner and Dementia Lead on C56, said: "You can see the calming effect the blankets and twiddle muffs have on patients, as well as seeing their confidence return – it makes so much difference."

Magical murals created for young patients

Children attending New Cross Hospital are now greeted by an "amazing" magical underwater sea world plus a display of unicorns and dinosaurs thanks to a £15,000 transformation which has become a TikTok sensation.



Where there were once dull and drab walls, bright colourful murals now dominate two lift areas approaching the Children's Ward, A21/Paediatric Assessment Unit and A22/A23.

Artists Daniel Russell-Ahern and Simon Greenaway, aka Mural Trader, are responsible for the transformation thanks to The RWT Charity, which has funded the artwork. TikToks of the duo's creations have attracted nearly 600,000 views between them on Mural Trader's social media channel.

Sarah Lewis, Matron, Children's Specialities and Outpatients at RWT, is the brains behind the new look after seeing similar work from Daniel when she worked at Birmingham Children's Hospital (BCH).

"When I started in post, I felt the areas needed to be more child-friendly, especially the lift areas by A21/PAU and A22/23," said Sarah.

"I'd seen the artwork at BCH and contacted Daniel. As this is one of the first areas children and young people and their families see, I felt having artwork would help reduce anxiety and be a nice start to patients' journey with us. We did a piece of work with posters and a social media post asked children, young people, their families and staff to vote for their two top themes. Daniel has worked through the night to complete it. His designs stood out over the others – the work is amazing."

Daniel and Simon took eight days between them over two and a half weeks to transform the areas after RWT's Estates Team prepared the walls.

"We're really proud of the work," said Daniel, who has been painting murals for five years and is dad to daughters Blake and Robyn.

"The brief was to create an underwater, calming space that was enjoyable to be in but we could also be a bit playful so we've got an octopus pushing the lift button. It's totally changed the space. We normally do bars and business spaces but it doesn't give you the same reward as hospitals because the places never really sleep. Even when you're painting at 2am or 3am, there's always people engaging with you, and that makes it more special."

Similar artwork will be completed in the adolescent waiting area in Children's Outpatients and the Phlebotomy Room to offer distraction and help create a calming atmosphere.

Mum's £2,900 concert fundraiser after loss

A mum who lost her baby daughter and nursed her son following his premature birth has helped raised nearly £3,000 for Wolverhampton's Neonatal Unit where both were cared for.



From left, Sharlene Wright, Kerry Harnett, Amanda Winwood, and from Bethel All Saints Apostolic Church – Jeremy Grant (JezPoetic), Pearl Laird, and Pastor Paul Francis

Sharlene Wright held a community fundraiser at Bethel All Saints Apostolic Church in Parkfields. After beating the initial target of £1,000, the amount stood at £2,050 before an anonymous donor generously match-funded the JustGiving total by adding £885 to make it up to £2,935.

Poetry by JezPoetic, gospel music and inspirational stories were enjoyed at the event, which was attended by Councillor Dr Michael Hardacre and Ms Lynn Plant, the Mayor and Mayoress of Wolverhampton.

Sharlene, of Goldthorn Park, gave birth to daughter Anaya via emergency caesarean on her due date of 4 February, 2022 at Wolverhampton's New Cross Hospital. Anaya, who weighed 7lbs 7oz, was taken to the Neonatal Intensive Care Unit (NICU) with breathing difficulties but died a day later in Sharlene's arms, surrounded by her husband John and family.

"She didn't cry out when she was born so her lungs didn't expand," said Sharlene, who works in business development for the National Autistic Society. We were afforded the privacy to bring family in and pray for Anaya, and Carole Sadler, our Bereavement Midwife, gave us wonderful support."

Almost exactly a year later, Sharlene gave birth to son Lucas, who arrived 12 weeks early on 3 February, 2023, also via caesarean. Lucas weighed little more than a bag sugar – 2lbs 7oz – and spent 66 days on the Neonatal Unit.

"We had the same Consultant, Dr Anu (Dr Anurada Subramanien, Obstetric Consultant), and lots of staff remembered us from our previous experience, so they were very understanding and supportive," added Sharlene. "If Lucas had been born 23 minutes later, he would have shared the same birthday as Anaya. Lucas was being fed through a tube and me and my husband John were taught to change and wash him while in the incubator."

Once discharged, Lucas was slowly weaned off oxygen, at home. A little brother to Asher, he is now thriving.

Sharlene is part of a planning team at Bethel, headed by Shereen Bryan, a former Midwife at Walsall Healthcare NHS Trust. They had the idea of a fundraising event, titled 'Let Everything That Hath Breath Praise the Lord' Psalm 150, verse 6.

"I'd never heard of the unit until our experiences," said Sharlene.

Among the speakers at the concert were Kerry Harnett, Senior Sister on the Neonatal Unit at RWT and Sharlene's lifelong friend Sangeeta Mastani.

Kerry said: "On behalf of the Neonatal Unit I thank Sharlene, Bethel All Saints Apostolic Church and all involved in the event. "It was an evening full of hope, thanks and belief. It is humbling to witness how communities we serve continue to support our unit. "The amount raised far exceeded the original target, which is amazing. The money will help the unit, the babies and their families who experience a Neonatal journey."

Arts and Heritage

Over the past year, the Arts and Heritage Group (A&HG) has delivered upon its aims to enhance the healing environment, develop community connections, and explore and exhibit the history of healthcare in Wolverhampton. The A&HG has brought about real change by engaging with patients, visitors, and the wider community through a range of projects and activities.

Arts in Health workshops at West Park

In April 2023, the A&HG worked with RWT Volunteering Services to reintroduce therapeutic arts workshops to the Neuro Rehab Unit (NRU) at West Park Hospital. These twice-monthly sessions are funded by The RWT Charity and run by passionate volunteers, with craft activities varying from decorating birdhouses to making dreamcatchers. Workshops ran from April until August, followed by a second series from November to March 2024.



Through the sessions, patients learn new skills and produce their own artwork which they can keep.

Sarah Cleaver, Senior Sister on NRU, said: "It has been fantastic having the workshops at the unit.

"It has increased morale for staff, patients and their relatives and has created a real buzz around the place. It has really helped lift the mood of our patients, and relatives love to see what their loved ones have created during the session."

Came to Care: Windrush and the NHS

The A&HG was fortunate to receive a government grant from the Department of Levelling Up, Housing and Communities (DLUHC) to deliver a project marking the 75th anniversary of Windrush. Between May and June 2023, two young artists were commissioned to explore the contributions of the Windrush generation to the health service, both locally and nationally. The artworks created by these young artists were unveiled at a showcase event, held on Windrush Day, 22 June 2023, at Wolverhampton Grand Theatre.



#WvSameDifference Festival

As a member of the Wolverhampton Cultural Education Partnership (CEP), the A&HG delivered a free drop-in craft activity at the #WVSameDifference Youth Festival, held at West Park in August 2023.

Run by artist Sam McCracken, the creative session enabled young people to develop their own visual vocabulary to express their thoughts around health, healing and care.



Sophie, who was born six weeks early at New Cross Hospital and has Sensory Processing Disorder, produced an illustration to explain how she feels.

"I have drawn how I see, hear, taste, touch and feel things and the colours that I don't like that make me feel anxious and the ones I do like that make me feel calm and comfortable."

Her mother Zoe, a university lecturer, said: "I think this is a brilliant opportunity for children and young people who can advocate for themselves to be able to do so. This is a wonderful event and I'm so pleased to see the NHS Trust engage in this way."

RWT 'Through the Decades' Calendar

As a part of the NHS 75th birthday celebrations in July 2023, the A&HG produced an 18-month calendar to show RWT 'Through the Decades'. Past and present feature side-by-side in a set of fascinating photographs which include scenes from the South Staffordshire General Hospital (later the Royal Hospital) throughout the 20th century, contrasting with the modern, airy wards and departments now in existence.



Elinor Cole, Arts and Heritage Co-ordinator, said: "In this special year for the NHS a calendar seemed a great way to look back over the achievements of the past and celebrate the present, while also thinking ahead to the future."

Royal Hospital Blue Plaque

The A&HG supported the unveiling of a blue plaque, sponsored by the Royal Hospital Nurses League, which will be fitted to the front of the Royal Hospital as it is redeveloped into apartments.



Former Nurse and Nurse Tutor at the Royal Hospital, Roy Stallard – who is now a hospital historian – said: "I think the plaque is a fantastic tribute to everyone who worked at the hospital. It will be a wonderful reminder of all the hard work and brilliant care which was delivered there."



Care, Create, Conserve

A museum charting the history of Wolverhampton's healthcare with fascinating exhibitions and creative community opportunities is being developed in the city centre, thanks to a grant of almost £140,000 awarded by The National Lottery Heritage Fund.



An exciting new programme called 'Care, Create, Conserve' has been pioneered by the A&HG, beginning in 2023 during the 75th year of the NHS. At the heart of the project will be the creation of Wolverhampton's first healthcare museum and co-creation centre.

The Healthcare Heritage Centre will feature an exhibition of medical artefacts, photographs, and memorabilia from RWT's collection while healthcare stories of today will be showcased through four community co-creation projects and a vibrant programme of talks and events.

Elinor Cole, Arts and Heritage Co-ordinator, said: "We are thrilled to have been successful in our bid and grateful to The National Lottery Heritage Fund for seeing the value in our vision.

"This will be an amazing addition to the city centre, connecting our communities and supporting local people to explore and share their own experiences.

"Health is universal and something we can all relate to, no matter our age, identity, belief, or circumstances, but it can also be uniquely personal. Care, Create, Conserve will seek to tell a story which acknowledges many different experiences and perspectives – a story from our history, but also from our present day."

The programme will also create opportunities for Arts and Heritage Volunteers to help manage the Healthcare Heritage Centre, as well as gaining unique opportunities for training in collections care and curation.

About The National Lottery Heritage Fund

Using money raised by the National Lottery, we inspire, lead and resource the UK's heritage to create positive and lasting change for people and communities, now and in the future. www.heritagefund.org.uk.

Follow @HeritageFundUK on Twitter, Facebook and Instagram and use #NationalLotteryHeritageFund

Since The National Lottery began in 1994, National Lottery players have raised over £43 billion for projects and more than 635,000 grants have been awarded across the UK.



Legacies

Give the gift of a lifetime. Discover how with a gift in your Will.

It's a common myth that only the rich and famous leave money to charity when they die. This couldn't be any further from the truth. The reality is that without gifts left in Wills by people like you, many of the charities we know, and support wouldn't even exist.

For years people have been remembering our hospital in their Wills. Their gifts have gone on to help future generations and enhance the experience of using services at RWT.

Often donors have experienced first-hand the high level of care and expertise on offer at The Royal Wolverhampton Hospital NHS Trust (RWT) and want to ensure future patients continue to have access to cutting-edge technology and excellent facilities.

We are honoured to receive legacy gifts, both large and small, from people just like you, who have chosen to help us make a difference to our community. Over the years, the legacies left by compassionate donors have been a vital source of funding for Your Trust Charity. A staggering £226,393.95 was donated in legacies in the year leading up to 31 March 2024!

Leaving a legacy to our Charity allows you to play a supporting role in helping patients, staff and families long into the future. The money that the Charity receives from the wills of donors is used according to their wishes, to pay for research, fund projects and buy equipment.

Leaving a gift in your will is a wonderful act of selflessness, and The Royal Wolverhampton NHS Trust Charity is extremely grateful to all those donors who consider supporting the Charity in this manner.

Including us in your Will:

If you choose to leave a gift in your Will to us, you'll need to include our name, address, and registered Charity number:

The Royal Wolverhampton NHS Trust Charity

New Cross Hospital

Location The Finance Department Building 12, Wolverhampton, WV10 0QP

Registered Charity no: 1059467

Give in Memory

Giving in memory is a distinct way to remember a loved one whilst making a valuable contribution to The RWT Charity

You can pay tribute to the memory of someone special in a number of ways. You could make a donation, hold a collection at a funeral or memorial service, set up an online tribute page, collect donations to mark a special date, such as a birthday, or even take part in an event or challenge in their name.

Your courage and kindness will ensure we can provide the best treatments and experience to our patients and their families, all in the name of your loved one.



Corporate and External Donations

NHS foodbank shortlisted for Black Country award

A foodbank set up to help NHS staff in Wolverhampton who are struggling with the cost-of-living crisis was shortlisted in the 2023 Black Country Chamber Business Awards. The initiative, developed in partnership between RWT Charity and its Facilities Team, was one of the finalists in the Employer of the Year category.

The foodbank forms part of the Staff Wellbeing Hub that has been created at New Cross Hospital as part of a package to support healthcare staff who are in need. Initially funded by a grant from The Charity, the Trust's Facilities Team turned a disused café into a fully functioning wellbeing hub facility within two weeks, providing a specialist fridge shelving and a counter, with appropriate kitchen equipment. The Charity has taken on the day to day running of the hub, which offers food and other essential items.

Amanda Winwood, Charity Development Manager, said: "We are so proud to have been shortlisted for this award for our efforts in establishing a meaningful support service for staff at a time of unprecedented difficulty for them.

"Our Group Chief Executive and Board continually remind us that our staff are the organisation's greatest asset, and we need to look after them to ensure they can look after others effectively which was the backdrop to setting up the hub. Our colleagues in Facilities have been fantastic – moving quickly to get things up and running, motivated by a desire to help those in need."

To date, 4,910 staff have received a free breakfast at the hub and 3,642 have used the food bank since it opened in December 2022.

Brendan Houston, Head of Facilities, added: "The Charity and Facilities made a great team when it came to getting this much-needed support established at New Cross Hospital. We believe that such provision means we are showing the Trust to be a compassionate and considerate employer towards its workforce."

The foodbank is open to all staff, including those working in the community and Cannock Chase Hospital and West Park Hospital.



"Unfortunately we didn't win the award. But, we continue to support our staff at this difficult time".

Wolves All Stars raise £2,230 for charity

A football match which attracted the biggest gathering of former Wolves players for a charity game scored by raising £2,230 for three worthy causes – including RWT’s Neonatal Unit.

Around 30 former Molineux favourites who played some 2,750 games for the club across six decades either played in or watched the match against FA Veterans at Bilston Town FC.

They were cheered on by a crowd of 300 at the Queen Street ground, who saw former captain Jody Craddock open the scoring for the All Stars with a towering header.

Matt Hill put the Wolves side 2-0 up just before half-time following a solo run prior to Chris Lake pulling one back for the FA side in the second half.

Craddock and Hill were two of more than a dozen ex-Wolves players who dusted off their boots to take to the field. They included League Cup winner Mel Eves, Simon Osborn, Adam Proudlock, Kevin Ashley, Micky Holmes, Jackie Gallagher, Tony Dinning, Colin Taylor, Paul Jones, Matt Forman and Dennis Pearce.

Among those watching were Phil Parkes, Matt Murray and Carl Ikeme, Steve Daley, Robbie Dennison, Alistair Robertson, Colin Brazier, Jon Purdie, Gerry Taylor and Joe Jackson.

The money was raised by admission to the ground, a raffle and an auction, plus £700 from the FA Veterans.

All proceeds will be split equally between the Neonatal Unit at New Cross Hospital, Breast Cancer Now and 1p36 Family Trust.

Long-term Wolves All Stars sponsor and secretary Jason Guy organised the game. His daughter Olivia was born with 1p36, a rare condition that typically causes severe intellectual disability. She spent around six weeks in the Neonatal Unit at New Cross from October 2020.

The money raised means the event easily surpassed Jason’s target of £2,000 and he was delighted with the turnout.

“It was an incredible amount to raise so I can only thank everyone who attended for their wonderful support and generosity,” said Jason, who attended the game with wife Aimee, Olivia and son Jonas. “It was wonderful to see people give up their time to make a difference to the lives of others. And to see more than 300 people in attendance with all the former players meant we made history. Everyone had a fantastic afternoon.”

Kate Cheshire, Head of Midwifery and Neonatal Services at RWT, said: “We’re delighted to see this money raised for our unit – thanks so much to Jason and the All Stars. This money will go towards caring for our sick babies and their loved ones. What a fantastic turnout of former players and the crowd too. Well done everyone.”



Footie favourites donation to help male cancer patients

Caring Wolves favourites have donated more than £16,000 to benefit Black Country Urology patients. Popular 1970s heroes Phil Parkes and Steve Daley, who have both been touched by cancer, visited New Cross Hospital to present a cheque for £16,680.03 to The RWT Charity.

Phil and Steve are now prominent committee members of the Wolves Former Players Association and the money, which will be used to benefit men with cancer, is the entire funds of the Maureen Parkes Breast Care Fund. This has raised more than £75,000 for RWT over the last 28 years to buy various pieces of equipment to enhance the treatment and care of patients.



Phil lost wife Maureen in April 2010 at the age of 62 after battling stomach cancer. After beating breast cancer in 1995, she set up the fund to raise the money for the Trust in thanks for the care she received.

Phil and Maureen's close friend Sheila Edwards, who was a Healthcare Assistant at RWT for 43 years, were the Trustees of the fund and Sheila helped organise many fashion shows which raised funds. Following her death, Phil carried on raising money for the fund in his wife's name through the Wolves FPA, through its popular annual golf days and other events, while St Columba's URC Church in Finchfield also made yearly donations.

Steve underwent an operation to remove his prostate cancer in spring 2022 and the former midfielder has since joined RWT Nurses promoting awareness of the condition.

Andeana Andreas, Urology Outpatients Departmental Manager at RWT said: "We're delighted to receive this money from Phil and Steve and are hugely thankful for the efforts of them, Maureen and the Wolves FPA over the years.

The department will use this money to benefit urology patients with suspected and proven urological cancers such as bladder and prostate cancer, specifically improving their care in the outpatient setting. "The Urology department is currently looking at ways to improve the outpatient management of some recurrent bladder cancers to help reduce waiting lists for standard operations and to improve the treatment of patients who are not fit for standard general anaesthetics. This could help drive forward these changes. The Urology services at RWT and Walsall Healthcare NHS Trust joined forces a little over a year ago, so this service will benefit a large population."

Former goalkeeper Phil, who played 382 games for Wolves between 1966-78, said: "I'm very proud of the work Maureen did and what we have done since her death to raise the money, and of the benefit it has given to patients in Wolverhampton and the local area.

"We feel it's the right time to wind the fund down, but there is still so much to do to help patients. As the money raised by Maureen's fund has mainly benefitted women, we thought it right that the remainder of the fund will go towards helping men."

Steve, who was once Britain's costliest footballer when he joined Manchester City after scoring 43 goals in 244 games for Wolves from 1971-79, returned to Urology Outpatients where he had his biopsy.

"I owe my life to the staff at New Cross Hospital and I want to help people who have what I had," said Steve, who also played for Walsall during a 17-year professional career. "What impressed me at the prostate cancer evening was that we had men in their 20s and 30s, not just older ages, so people are starting to realise that this is something that can affect anyone at any time."

Amanda Winwood, RWT Charity Development Manager, said: "We're grateful to Phil and Steve for their donation and everyone who has donated to Maureen's fund and supported the events over the years. This money will hugely benefit our male patients."

Razor has Hi Ho tattoo for a good cause

He was used to giving opponents the needle on the football pitch but Neil "Razor" Ruddock found himself on the receiving end!

It was all for a good cause as the former Liverpool and Tottenham defender had a Wolves tattoo to raise money for a special project.

He visited New Ink in Tettenhall to have the artwork to help The RWT Charity towards a target of £30,000 to renovate its garden in the Children's Ward at New Cross Hospital.

Neil is good friends with Wolves fanatic and serial fundraiser Jason Guy, who has raised more than £400,000 for good causes, including The RWT Charity. Jason's daughter Olivia, has 1p36, a disorder that typically causes severe intellectual disability.



Neil "Razor" Ruddock having his tattoo, with, from left, Craig James, Jason Guy, Amie Rogers and Amanda Winwood

"I've known Jason for a few years now and his daughter Olivia has had a lot of treatment at New Cross Hospital," said Neil.

"He told me how the garden could do with a bit of TLC for children and their families so I thought I'd have a Wolves tattoo. He took me to a Wolves game against Nottingham Forest and I loved it when the fans sang 'Hi Ho Wolverhampton!' So I thought I'd have a tattoo with that on and I said Jason had to have a Millwall (Neil's boyhood team) tattoo and then we'd see how much money we could raise."

Jason added: "We saw the difference it made to us as a family to have that outside space and my wife Aimee used to come home and say 'it's a lovely space but it could do with a bit of work.'



"So I asked The Charity and the ladies told me about the garden. It's something everyone can get involved with raising money for, to help the community, and that £30,000 will change the garden for years to come."

Neil had 'Hi Ho Wolverhampton' with the Wolves emblem on his right forearm, where the artwork joined tattoos from his former clubs Tottenham (To Dare Is To Do) and 'YNWA' the abbreviated form of You'll Never Walk Alone, the Liverpool anthem. Jason had one saying 'The Wall' on his right bicep.

It was a dream come true for New Ink owner Craig James, who is a Liverpool fan. "This is a big highlight for me because I used to watch Razor play in the early 1990s when he was at Liverpool," said father of two Craig, from Wombourne.

He completed the £50 tattoos free of charge.

Amanda Winwood, Charity Development Manager for The RWT Charity, said: "It's a wonderful gesture by Razor and Jason to have their tattoos done – rather them than me! But they are truly great sports and this will raise a lot of money towards our garden fund."

Wolverhampton's healthcare history shaped by local voices

Residents were taken back to 1849 during a highly anticipated spoken word performance through the Care, Create, Conserve project, led by The RWT Charity's Arts and Heritage Group.

The performance took people through a historical journey of healthcare, exploring themes of gender role stereotyping, facilities and access to healthcare, based on their perspectives.

The event, at the Mander Health Hub, was led by poets Sophina Jagot and Emma Purshouse who shared a potted history of the and wider healthcare in the city, going as far back as 1849. This was followed by a unique soundscape performance collated through listening activities during residency sessions within the health hub.

The poets took inspiration from current and former NHS staff, local historians and residents' memories and experiences of healthcare throughout the years to craft their unique performance.

Sophina said: "It's been fantastic to talk to so many people and these lived experiences are reflected within our work."

"We've had a blast uncovering Wolverhampton's healthcare history and each individual perspective has shaped our performance. People have been excited to talk about their memories and share their thoughts – it's been a real pleasure to piece this together," Emma added.

In the audience was Helen Trainer, Healthy Age Co-ordinator, who has worked for the NHS since 1976. Soon to join the Arts and Heritage Team as a Volunteer, she said: "It's an interesting and engaging way to capture and showcase the healthcare history of Wolverhampton, representing a variety of experiences and memories. I am looking forward to my role as a volunteer throughout the remainder of the programme."

Frances Land, Co-Artistic Director from Black Country Touring,

collaborators of the programme, praised the poets for creating two inspiring pieces. She said: "I am so pleased to see the final performance after much development through capturing stories, thoughts, and experiences through listening and engagement exercises. The performances really capture the essence of healthcare history in Wolverhampton in such a fun and accessible way."

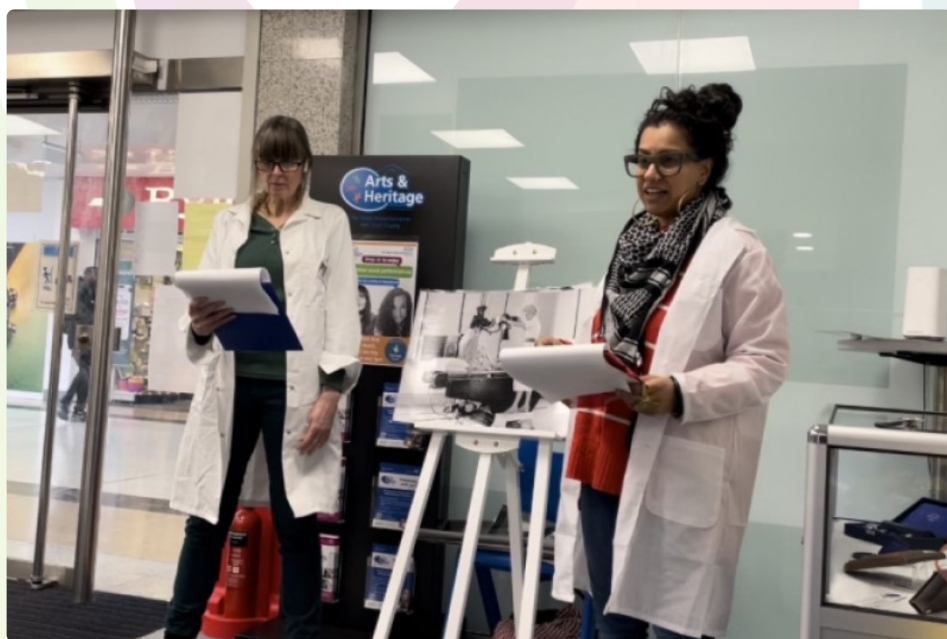
Alex Vann, who lives locally, said: "It's an ingenious idea to show healthcare history through the voices of local people. I particularly enjoyed reflecting on the archive of photographs - they complement the words, and the combination of sound and visuals helped shape a meaningful representation of history."

Following the performance, attendees saw a sneak peek of a wider collection of healthcare heritage items that will form part of a fascinating exhibition in a new Healthcare Heritage Centre and co-creation space.

This project has been made possible thanks to the National Lottery Heritage Fund.

Elinor Cole, Arts and Heritage Co-Ordinator at RWT Charity, said: "Thank you to all of our communities which contributed to the showcase event – their input was invaluable and really helped us to paint a picture of healthcare in years gone by.

"Sophina and Emma brought people's experiences and memories to life so vividly for us and I'm sure their interpretation will have enthused the audience and left them keen to find out more."



Emma Purshouse (left) and Sophina Jagot

Young patients' luxury ride to theatre

Children undergoing surgery in Wolverhampton will be able to 'drive' themselves to the operating theatres in a Tesla electric car.

Two miniature version of the electric car have been donated to The RWT Charity and will be used to transport children to theatre as well as for their scans.

The Tesla Owners Club UK donated the cars to make the experience of undergoing surgery less daunting for younger patients.

One of the first to try out the shiny new wheels was six-year-old Stanley Cochrane who was diagnosed with Leukaemia in December.

Stanley has to frequently come into hospital for procedures, blood transfusions and appointments.

He said: "I always get worried when I go for surgery but now I won't feel as nervous by driving the car. I love how fast it is. Thank you so much for letting me drive one – it is brilliant."

His dad Lee Cochrane said he was thrilled to see the new cars.

He said: "Something like this is right up his street. He has model cars and was watching car videos on YouTube earlier, he has his own toy Lamborghini he takes everywhere so it is great for Stanley to be able to drive his own little car. I think it is a fantastic idea and will really help ease the nerves of the children going to surgery."

Anthony-Hugh Selormey, from Tesla Owners Club, said the donation was thanks to the generosity of the Tesla Owners Club members and the charity events they run.

He added: "To give back to the community is fantastic and a lot of fundraising has taken place to be able to make this donation. To bring a bit of fun into what can be a traumatic experience is what we aim to do with these cars."

Kirsty Lewis, Acting Deputy Head of Nursing for Children's Services for RWT, said: "We are so grateful for the donation. Being in hospital is never a nice experience for children and little things like this can make it so much nicer for them. We hope it will get rid of some anxiety they get from being in hospital and it will help make it a little bit more fun for them."



Kirsty Lewis, Shayne Ihedoro, Anthony-Hugh Selormey, Stanley Cochrane and Amie Rogers

Classroom creativity inspires latest arts and heritage project



Enthusiastic schoolchildren have brought the iconic façade of Wolverhampton's Royal Hospital to life in a colourful collage and 3D sculpture.

The artistic interpretations will shape part of a creative showcase, focusing on language and identity in healthcare settings, with a spotlight on disability and deafness.

This forms part of the Care, Create, Conserve project being led by The RWT Charity's Arts and Heritage Group. It is funded by The National Lottery Heritage Fund.

The project will see schoolchildren and local community groups embark on an artistic collaboration with Real Arts Workshops, led by



Alex Vann, graphic designer, artist and musician and Gary O'Dowd, profoundly deaf crafter, and British Sign Language (BSL) tutor, who provide high-quality, tailor-made creative arts workshops.

The artistic duo will explore the theme of language in healthcare, through working with community groups to co-create a final artwork.

This creative process began with sessions with pupils from years 7, 8 and 11 at Penn Fields School. They were asked 'What does the NHS mean to you?' generating answers including "friendly and hard working", "helps me when I'm poorly" and "support and protection."

Thrilled with the artistic flair coming from the classroom, Shelley Cooper, Arts Lead at Penn Fields School said: "Feedback from children and staff has been very positive and many have expressed how much they have enjoyed it. The model looks amazing."

The 3D sculpture features the recognisable columns that still stand at the entrance of the Royal Hospital. The triangular roof can be lifted off to view hospital scenes, recreated by the students using plastic figurines.

Passionate about engaging people in meaningful arts experiences that build confidence and break down barriers, Alex and Gary said: "We want the creative sessions to be led by the people we are working with. We will be running multiple sessions with community groups, and we are excited to see how participants will add their own personalities and thoughts to shape the final piece."

It is hoped the final artwork will represent a variety of thoughts and feelings on language in healthcare and give those who have limited access to creative opportunities, a chance to share their voice.

Gary will also deliver some BSL teaching as part of this project. The final creation will be showcased in the new Healthcare Heritage Centre, housed within Wolverhampton Central Library.

Volunteering at RWT

Introduction

The Trust continues to be fortunate to have the support of volunteers - unpaid members of our local community who offer their time willingly to help.

As always, we hold provision of a positive patient experience at the forefront of our volunteering activity, and we aim to place volunteers into roles which complement, but do not replace, paid members of staff. Volunteers add an important 'extra' factor to helping us provide a positive patient and visitors' experience.

Review of 2023- 2024:

Community Clinical Volunteer role

The Volunteer Services Team has continued developing the Clinical Volunteer role within RWT and providing further support to wider teams across the Trust. Within the last 12 months, Volunteer Services have successfully recruited 131 new volunteers across three cohorts (May, June, and October 2023) who are supporting services at Cannock, New Cross, and West Park Hospitals. The attributed volunteer hours equate to 12,598. This is an increase of 6,940 hours compared to the previous year.

The Volunteer Service continues its partnership with the NHS Cadets which is a national programme for young people who receive training by St Johns Ambulance and information on the variety of roles within the NHS and is supported by NHSE.

Roles in Clinical Areas

Our Clinical Volunteer role continues to support Trust areas most in need and we currently have 127 Clinical Volunteers actively at RWT. The volunteer service has also seen an expansion of medical and surgical wards receiving volunteer support with the development of clinical support roles in areas such as Renal Home Therapies, Dermatology, Ophthalmology, Paediatrics, and Oncology (Ward B12, B12 Durnall, and C35 Deanesly).

We have also seen an increase in admin support roles in areas such as Cardiac Rehabilitation, Radiology, Cardiology, Maternity and Patient Access and appointment support roles in areas across Trust sites.



In this reporting period, volunteers have dedicated 12,598 hours of their free time to support New Cross Hospital (9,962 hours), Cannock Chase Hospital (1,606 hours), and West Park Hospital (554 hours). Other contributing hours have been committed to other Patient Experience initiatives such as Patient Involvement Partners and the HOPE Project which is detailed further below.

New Cross Hospital is where most of our volunteer opportunities are. In the past year, the Trust areas with the most volunteer support were the Discharge Lounge (897 hours), Acute Medical Unit (622 hours), B14 Cardiology (588 hours), ED (476 hours), B8 Cardiothoracic (471 hours), and C18 Elderly Care (430 hours). Other areas with high levels of support were Staff Wellbeing Hub, D7 General Surgery, C21 Stroke, C8 Renal Home Therapies, and B2 Cardiac Rehabilitation.

Other roles are detailed within this report.

Arts in Health Programme

The Arts in Health programme was re-launched at West Park Rehabilitation Hospital in April 2023 after being stood down due to the COVID-19 pandemic. The programme is funded by the RWT Charity Arts and Heritage project, and the funds provide craft resources that enable the programme to be delivered by RWT volunteers on the Neuro-Rehab ward, supporting patients recovering from neurological trauma through therapeutic arts activities.



The collaborative working between the Volunteer Services Team and the Arts and Heritage project has resulted in a successful first term in which saw volunteers supporting the King's Coronation and NHS 75th Birthday celebrations. Following a review of the first term, feedback resulted in improvements to the programme design and delivery. The programme has recently finished its second term and is currently being reviewed and feedback collected. We aim to continue delivering the programme across 2024/25 and hope to scale across other Trust sites in the near future.

Staff Wellbeing Hub

Since December 2022, RWT volunteers have been supporting The Charity's Staff Wellbeing Hub initiative, a food bank, and essential items service to help support staff during the cost-of-living crisis. So far, volunteers have given more than 669 hours of their time to support mainly the afternoon service in the Hub, but have also extended their support to the morning shifts due to this being a busier time. The Staff Wellbeing Hub is a great addition to our volunteer opportunities, providing variety and a non-clinical, but essential, support service to our staff. The Charity has also provided the opportunity for one volunteer to progress on to paid employment via the Trust's Temporary Staff Bank Team, providing paid employment at the Hub.

Career Development and Progression

Volunteer Services are continuing to seek pathways and opportunities for volunteers to access employment development opportunities as, for many, this is their aim. During this year, we have successfully supported 11 volunteers with gaining Bank or permanent positions in the Trust. The Volunteer Services Team also continues to identify opportunities for development for volunteers including access to enrol on the Care Certificate programme if certain criteria are met, as well as accessing personal development courses that the Trust provides internally.



Looking Forward 2024/25

We are looking forward to a collaborative voluntary service across RWT and Walsall Healthcare NHS Trust, pooling resources and providing opportunities for volunteers across both organisations.

In partnership between the two Trusts, we want to explore volunteering in education, and supporting young people in local communities. We recognise our role in supporting the workforce of the future, particularly as 54% of our volunteer workforce is between the ages of 16 and 25.

We have developed a Volunteer and Engagement Hub in the Heart and Lung Centre. This is volunteer-led hub to provide information to patients and visitors, supporting with wayfinding and signposting, and promoting wider Trust services.



We will continue to raise the profile of volunteering and staff awareness of what is involved in the supervision of volunteers, as well as recognising achievements.

Rewards and Celebrations

In May 2023, as part of the King's Coronation celebration, we worked collaboratively with The RWT Charity to deliver the 'Big Help Out' celebration event at New Cross Hospital. The event was joined by our Group Chief Executive and Group Chair to award our volunteers with certificates and a special commemorative pin badge to recognise their outstanding contributions.



This was followed by a social media campaign in June for National Volunteers' Week, focusing on success stories, role highlights, and staff feedback on the positive impact of volunteers.

The Volunteer Services were delighted to have been shortlisted for the three categories in the 2023 Helpforce Champions Awards. The awards were held at the Royal Air Force Club in London in October 2023. RWT Volunteer Services came away with all three awards - Staff Champion, won by Charity Development Manager Amanda Winwood, Volunteer of the Year, won by Kemal Osman, and the Volunteer Services Team won the Celebrating Equality, Diversity, and Inclusion award. This highlighted RWT Volunteer Services at a national level for its achievements in increasing volunteer opportunities for volunteers with complex needs and learning disabilities.

In addition, in November 2023, the joint RWT Charity and Volunteer Awards returned for the first time since before the COVID-19 pandemic at the Molineux Stadium, an event attended by Trust Executives to highlight the achievements of volunteers and Charity fundraisers.



Events

King's Coronation – Big Help Out

We honoured more than 50 volunteers who work for RWT as part of our coronation celebrations. The volunteers were celebrated at an event outside the hospital's Emergency Department, where they were presented with a certificate and a commemorative King's Coronation badge in recognition of their efforts.

Among the volunteers whose efforts were celebrated was Lisa Wright, a mother of one from Penkridge. Lisa has been happily giving two days a week of her time on Wards A5 and A6 Orthopaedics, and says she owes her life to RWT staff. Her life was saved by surgeon Deepak Singh-Granger after she was diagnosed with stage 4 bowel cancer and given two hours to live before a tumour the size of a bag of sugar was removed from under her ribs.



Another volunteer who was honoured was Lasanthi Wawalage who settled permanently in the UK from Sri Lanka in 2015.

Lasanthi volunteers two days a week on Ward C18: Women and Elderly Care. She decided to join her husband Philip Weaver, who became a volunteer after an accident left him with a physical disability.

The event, organised by The RWT Charity and supported by the Trust's Patient Experience Team, was held partly to recognise The Big Help Out. The Big Help Out was a national day of volunteering which was part of a campaign led by King Charles III to showcase how volunteering benefits both communities and the people who take part.

The monarch was represented at the event by Professor Martin Levermore MBE, Deputy Lieutenant for the West Midlands and Non-Executive Director at RWT. Professor Levermore said he was honoured to read the King's speech, adding that the volunteers were the first to hear it.

He said: "Each one of our volunteers is an exemplar to our cause."

Sir David Nicholson KCB CBE, RWT and Walsall Healthcare NHS Trust Joint Chair, gave each of the volunteers their certificate and commemorative King's coronation badge.

Sir David said: "One of the reasons why this Trust is regarded as one of the top five in the country is that it's deeply connected to the local community. Volunteering is a fantastic and selfless thing to do and we absolutely recognise it dearly.

"People have calculated how much money all of the things volunteers do would cost but I don't think that's the right thing to do. It's about those individual moments that you have with patients and their loved ones, that they will remember forever. That's why we're particularly thankful for the incredible work you do.

This is our small way of recognising the contribution you make to the community and our patients. The coronation of King Charles III is an opportunity for us to think about our place in society and think about how we can improve things and make them better through the Big Help Out. As part of that, we want to genuinely recognise the contribution our volunteers make to this wonderful institution."

Professor David Loughton CBE, Group Chief Executive, added: "It really is a privilege to see so many volunteers because I see the work you all do and I'm very proud of it – you contribute so much and it's very much appreciated.

"Some of the letters of appreciation we get are astounding, it's incredible how often volunteers are mentioned in terms of interacting with patients and their families. I'm also pleased that our volunteer numbers are getting back to what we had pre COVID-19, but we're always on the lookout for more."

Eleanor Morris, Deputy Head of Patient Experience (Strategy and Engagement) at RWT, said: "It's a lovely day to celebrate our volunteers and we're proud to recognise their value and contribution."

NHS 75

Staff across The Royal Wolverhampton NHS Trust made the 75th birthday of the NHS one to remember. And some of them were the stars of special BBC Radio WM's breakfast and morning shows.

Roving reporter Leona Smart interviewed staff at the hospital and these stories were shared with presenter Kathryn Stanczyszyn, who was broadcasting live from Walsall Manor Hospital between 10am and 2pm.

Doreen Black, Head of Nursing at RWT, who has worked for the NHS for 35 years, told listeners her career was "a lifelong passion."

She also spoke of the importance of good role models both for herself and her colleagues.

Steve Baxter, Porter, performed a magic trick and spoke of visiting the Children's Ward to cheer up young patients. He also worked hard later in the day as part of a fun event outside the Emergency Department where his unrideable bike was given an outing.

Professor Matthew Brookes, Clinical Director of the Clinical Research Network West Midlands (CRNWM) which is hosted by RWT, shared his vision for the future.

He said: "I want every patient to say: "Can I be involved in a research study?"

As part of the #NHS75 celebrations, hosted by The RWT Charity, staff were able to take part in a bake sale and a fun day in the Emergency Department marquee which featured games and a range of new and exciting craft stalls. Visitors also had a go on a 12-foot inflatable dart board.

Amanda Winwood, RWT Charity Development Manager, said: "It was fantastic to see our staff celebrating NHS 75 together and taking part in the fun activities which have brought smiles to the faces of patients, staff and families

"We are so proud to be part of the NHS!"

Roundabout makeover is a showstopper

A roundabout near New Cross Hospital had a makeover to celebrate the NHS's 75th birthday – thanks to a generous-spirited pub landlord.

Wayne Parkes, licensee of The New Pheasant in Wednesfield with wife Janet, used his skills as a former builder to transform the traffic feature into a tribute to the NHS.

He created three feet high stand-up NHS 75 lettering in mdf, made a cake in the middle and displayed four banners saying 'Happy Birthday NHS' courtesy of DIS Graphics to decorate Wood End roundabout at the junction of Wood End Road and Prestwood Road West opposite his pub.

He marked Remembrance Day, Christmas, Valentine's Day, St George's Day, Easter, the Queen's Jubilee, Halloween, the Queen's funeral and the King's Coronation in similar fashion.

His latest pieces of work cost him £420 and took two weeks to make, but it's a labour of love for Wayne.

"It's an honour to do it because of what the NHS does for everyone and to try to put something back," said the father of two.



The decorated roundabout with the NHS 75 sign and cake, from left, Amie Rogers, RWT Charity Fundraising and Lead Digital Engagement Officer, Janet Parkes, Wayne Parkes, Amanda Winwood, Charity Development Manager, Jane Stevenson MP, Lindsey Goodall, Community and Events Fundraising Officer

Calendar captures then and now scenes

Images showing a range of past and present hospital scenes are featured in a limited-edition calendar produced by The RWT Charity.

The Charity has worked with the Arts and Heritage Group to produce the 18-month calendar which fittingly starts from July 2023, the month that the NHS celebrates its 75th birthday, and goes through to December 2024.

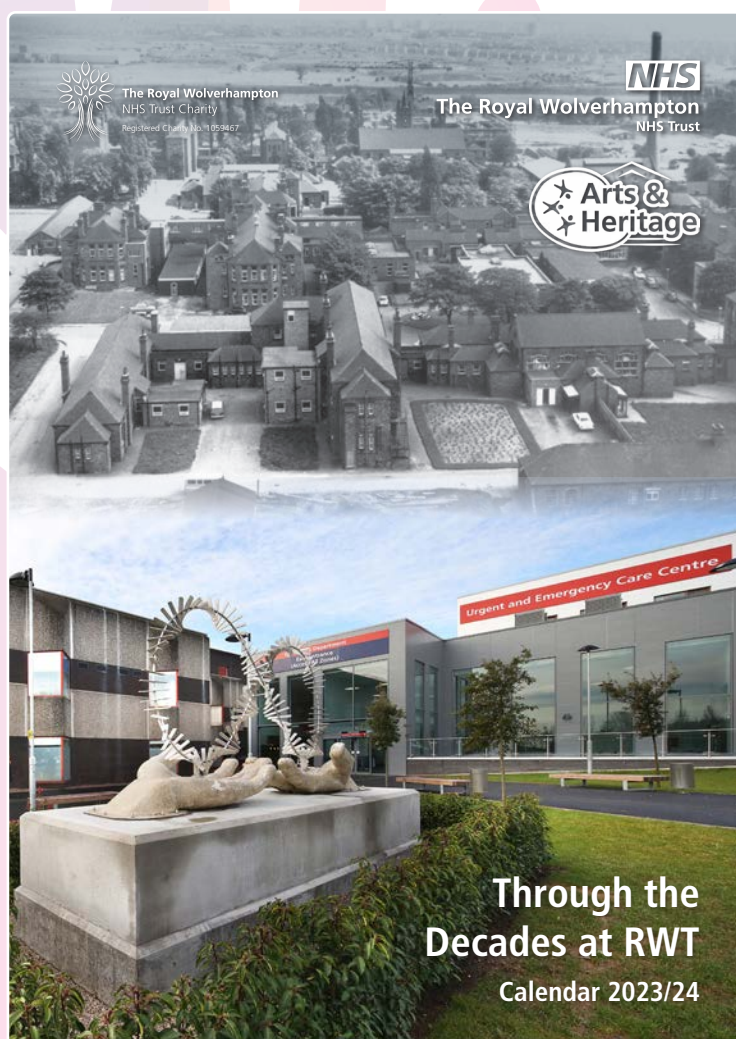
Photos include South Staffordshire General Hospital on Wolverhampton's Cleveland Road in 1846, and a Nurse entertaining children with a quaint ventriloquist's dummy, contrasted with the modern, airy wards and departments now in existence.

Elinor Cole, Arts and Heritage Co-ordinator at RWT, who created the calendar, said: "In this very special year for the NHS a calendar seemed a great way to look back over the achievements of the past and celebrate the present, while also thinking ahead to the future.

"Each page features a juxtaposition of photos old and new. It's fascinating to compare the difference in clinical environments, reflect on how far equipment and medicines have come, and look back through all the ways NHS staff have gone above and beyond to provide their patients with positive and hope-filled experiences over the years. The environments may change but the care and compassion remain throughout.

"I've loved creating this calendar and reflecting on how the NHS has transformed itself over the years."

A limited number of calendars have been printed and these cost £5 each. They are available from The RWT Charity by calling 01902 694473 or emailing rwh-tr.fundraisingteam@nhs.net.



Charity & Volunteer Awards 2023



The Charity and volunteer Awards recognise our exceptional individuals and teams for their dedication and commitment to RWT.

They are a superb opportunity to celebrate the significant contribution of our outstanding volunteers and charity supporters, and to share their achievements which enhance the experience for the wider benefit of patients, staff and their families. To mark this occasion, we held our first face to face awards event post COVID-19 and brought volunteers and supporters together to celebrate them.

Categories and Winners

Volunteer Rising Star



And the winner is..... Jessica May Causer.

Those who nominated Jessica said how friendly and helpful she is and how she has helped the way the patients experience the ward and how the patients view the hospital experience.

Volunteer Team Award



And the winner is..... Arts in Health Team (Gurpal Matharu, Shriya Patel, Javine Whitter and Lucy Hopkins).

The team which delivers the arts in health programme has been amazing. The team is made up of consistent volunteers who have remained reliable in their role. The programme has received fantastic feedback, and we can see the positive impact it has made. Senior Sister Sarah Cleaver said how much the programme has helped patients. She also mentioned that it was great for family and visitors for seeing what their loved one has done whilst in care on NRU and that they are cared for and there is an excellence in care delivered. Because of their hard work and commitment, the programme will be continuing on to another 'term'. They are amazing and have made such an impact!

Outstanding Volunteer Achievement



And the winner is..... Kemal



Kemal joined the RWT Volunteer Team in January 2023. Since then, he has committed to 415 hours of volunteering. Kemal is an inspirational man, and his story has touched our hearts. He has survived cancer following treatment on D7 and now uses his own cancer experience to support other patients going through the same. Kemal has a stoma bag fitted and shares how he came to terms with something so life-changing and supports and inspires others. He is now part of our Patient Involvement Partners (PIPs), using his own patient experience and perspectives to improve current Trust services and contribute to the development of new services. Kemal says he missed his vocation in life, and never thought of himself as someone who could care for others like he has. He has now joined Bank staff on D7 but continues to volunteer alongside. He has built very strong working relationships with the staff who love him. He has achieved so much, not just getting on to Bank, but winning Volunteer of the Month and being shortlisted for a national award for 'Volunteer of the Year' that he went on to win.

Special Recognition Award – Volunteering Staff Star



And this special award goes to... Maria Glover - Cardiac Rehabilitation Nurse Manager

The reason we chose Maria for this award is that she has a long history of welcoming volunteers into Cardiology and Cardiac Rehab. In fact she attended the awards with John Howell, one of our longest-serving volunteers who recently came back to support Cardiology after a break.

Maria welcomed a young volunteer to her area earlier this year who came with some complex support needs of his own. Mara has integrated Thomas into the admin area of Cardiac Rehab successfully, recognising the extra support Thomas needs and providing a welcoming, safe and quiet space for him to flourish in this role.

Maria is welcoming to volunteers, engages with them, recognises the value they can bring, and is truly an exemplary staff leader of volunteers within the Trust.

Volunteer Long Service Award



And the winner is..... Polly Cartwright

Nominees told us Polly consistently goes above and beyond in her role. Polly's dedication shines through her exceptional mentoring skills, providing invaluable guidance to new volunteers, helping them integrate seamlessly. Her willingness to lend a hand whenever it's needed has been instrumental in the successes of the volunteering team and that she is a truly deserving candidate for this award.

Special Recognition Award – Exceptional Volunteer Service



And this award goes to... John Bunting

John joined the Trust as a volunteer in 2008, initially along with wife Josie. John has supported the Appleby Suite and Discharge Lounge from then until now - being very committed and loyal to this team. He has made hundreds of cups of tea for patients (and staff), talked to patients and laughed with them, cheered them up, and listened to them when they have been talking about their fears and anxieties.

On top of this, John has helped us out in a number of additional ways. He has helped us seek the views of patients through surveys, assisted in different ward areas during times of crisis such as winter pressures, tidied and maintained the garden outside the Children's Ward, been a 'secret Santa', and helped the The RWT Charity out at various events, including being an annual 'Mr Christmas' for a few years running.

Unfortunately, in 2023 John made the difficult decision that he can no longer volunteer due to his health.

On behalf of all the staff in the Patient Experience Team, Charity, Appleby Suite and in fact all of the Trust John, we wanted to honour your service as a volunteer with this award and hope this goes some way in showing you how thankful we are.

Staff Fundraising Champion



And the winner is..... Deepak Chand

Deepak has been a breath of fresh air to work with. He has undertaken his own fundraising challenge by way of LLHM in April this year and raised £1105 which is amazing. And he is keen to run again next year. Deepak has also been a strong advocate for enhancing the environment within Deansley Unit, Snowdrop and also our Clinical Haematology Unit for young people. He has set plans for a garden revamp, vinyls within cubicles, TVs, RockinR gaming systems, laptop, chemo bags and revamp of the roof terrace garden. The impact these changes will have on our patients will be immense and make such a difference to their journey. It is such a pleasure to work with Deepak.

Young Fundraiser of the Year



And the winner is..... Alfie

We were told by your many nominees that your smile has helped a lot of children undergoing gruelling treatment by providing comfort packs, Christmas gifts, Easter gifts and funding special days out. While Alfie was receiving treatment for a brain tumour, he wanted to raise awareness and raise money for other children going through similar situations. He has raised significant amounts of money and has his own charity called @alfiessmile where money is raised to help put a smile back on the faces of children going through battles of their own, while still supporting our Charity.

Well done Alfie – you are a credit to your family, friends and RWT.



But we also wanted to celebrate Amelia Mae, Ollie and Zach, Logan and Ricardo and all the nominees for Young Fundraiser of the Year.

You are all amazing. Some of you have been dealing with your own illness but still thinking of other children in hospital. You are truly inspirational young people who should be so proud of the difference you have made and continue to make. Thank you all and your parents for being there with you and encouraging you.

Corporate Charity of the Year



And the winner is..... Collins Aerospace.

Sharn rallied the troops at Collins Aerospace to support our elderly care Christmas campaign in 2022. When she contacted us back in September we linked with the Matron for the area and made suggestions of things patients would need. Sharn and her colleagues went above and beyond and delivered 130 gift bags to be given out on Christmas Day to every elderly care patient in our hospitals. Handwritten cards accompanied the gift bags which included art therapy books, crayons, socks and a sweet treat. Then at Easter the team arrived with 500 Easter eggs for the children's wards/ departments and also our elderly care wards. Sharn is so motivated and loves to get behind projects. She has offered to undertake a Corporate Social Responsibility Day and work on a project here to transform an area for patients.

Well done to you all.

Fundraiser of the Year



And the winner is..... Jason and Aimee Guy.

They both continue to actively fundraise for our Neonatal Unit and Children's Ward where their daughter Olivia who has a genetic condition called IP36 has spent a lot of time here at the Trust.

Jason and Aimee are great supporters and want to make a difference to others. In three years of fundraising, they have raised £30,000 which is amazing. This has been through events, books sales, Wolves memorabilia, golf days, meet and greets with ex Wolves players. They are an inspirational family who have their own journey with Olivia but still go above and beyond to help others.

Very well deserved.

Fundraising Team of the Year



And the winner is..... Goodyears - The 5/344 Transport and General Workers Union Benevolent Charity.

Your enthusiasm and passion for making a difference to our patients and staff is amazing. Since 2016 the group has donated more than £400,000 of equipment - the last donation was for our sensory room in the Children's Ward at New Cross Hospital. The sensory room has been a great addition to the ward, allowing our youngest patients to take some time to relax in the lovely safe, sensory space. We were also fortunate enough to buy a sensory trolley that can be taken to the bed space of those more poorly patients.

A huge thank you to each and every one of you for your continued support which has made a huge difference over the years.

Charity Special Recognition Award



Our final award is a special recognition to say a huge thank you to staff that always, without question go above and beyond to help the Charity Team deliver its work. Whether it is dealing with reindeer, car parking, helping to move cages of stock for the Staff Wellbeing Hub, helping at big events, lighting up the site at Christmas and other festivals, secret missions, and generally being amazing whenever we need them. Congratulations to Estates, Catering and Security who truly deserve this award for always going above and beyond.

Christmas Lights Switch-on



Christmas was officially declared at RWT when staff and patients got into the festive spirit with the annual lights switch-on.

The glittering event, organised by The RWT Charity, was attended by people of all ages in the ED Marquee at New Cross Hospital.

A total of £813 was raised for the charity which will be used to provide additional items to enhance patient experience - above and beyond what is provided by the NHS.

The day kicked off with a Christmas market where staff, patients and visitors were able to visit a host of seasonal stalls.

One of the stall holders, Helen Harris, said there was a lovely atmosphere in the marquee. Helen, who owns NeleBelles Chic selling handmade scrunchies and hair accessories, said: "It has been a great event and I have really enjoyed taking part. It has been lovely to meet staff and patients and showcase my items."

Another stall holder Jo Dudley from Bilston was at the event selling homemade jewellery.

She said: "I have loved being part of this event. Everyone I have met has been so friendly and chatty. The lights around the site look great as well!"

The official switch-on was carried out by Gwen Nuttall, RWT Chief Operating Officer and Deputy Chief

Executive, Father Christmas and special guest, six-year-old Stevie-Rose Richards.

Stevie's mum Kayleigh Richards works as an administration assistant and attended with her family. She said: "It was a real honour to see Stevie turn on the Christmas lights, she absolutely loved doing it and it has made her very excited for Christmas."

After the switch-on the crowds were treated to Christmas carols sung by the RWT singers.

Amanda Winwood, Charity Development Manager, said: "We are so grateful to everyone who came out and supported us. A special thank you to E H Humphries, Eyre and Elliston and Meashams for providing the lights and labour to support our Estates Team. It was great to see so many happy, smiling faces. It is a real highlight of our calendar, and I am glad so many people could come out and enjoy the festivities."



Grants

NHS Charities Together Grant

Holistic Opportunities Preventing Exclusion (HOPE) project

Project start date April 2023 – Project update April 2024

The Charity secured a grant of £220,000 to help up to 1,000 vulnerable people in Wolverhampton over the next two years, in partnership with Wolverhampton Voluntary and Community Action (WVCA) for project Holistic Opportunities Preventing Exclusion (HOPE).

In the first year the grant allowed us to:

Recruitment Staff for the Project

- Link Project Co-ordinator appointed
- Link Project Administrator position

Project Steering Group

- Established in April 2023. Meetings held quarterly. Membership is RWT Patient Experience management team and Charity Development Manager, key stakeholders from WVCA Wolverhampton Voluntary and Community Action (WVCA), and Black Country ICB and One Wolverhampton

Volunteer recruitment and training

- Volunteer recruitment started in April 2023 and new volunteers started roles in July 2023.
- Logo and branding designed for the programme and volunteer uniform and training packs bought and provided
- Joint volunteer training and induction agreed with WVCA as a two-part process
- So far, we have recruited 63 volunteers

A third of the grant – £75,000 – was available for small community groups to offer activities aimed at improving social connectivity. These bids are assessed by the steering group and decisions made. To date, commissions have been allocated to the following and further commissions are to be assessed and awarded.

Organisation Name	Activity Title	Amount awarded	Number of beneficiaries
Wolverhampton city of Sanctuary	Weekly Drop-in	£5,000	100
Black & Minority Ethnic Housing Consortium	“Sewing Me, Sewing You...”	£2,000	50
Mandem Meetup	WorkIn / Workout	£5,000	60
Wolves Play Café	Fun and Friendly Faces	£5,000	507
Magical MC CIC	Social Meetup with Public Speaking Training	£5,000	30
Secret Angels WLVCIC	Java Joy	£5,000	35
Social Steam Engine Community Association	Life in Bloom	£5,000	120
Total		£32,000	

To date, 36 referrals have been made to the HOPE project and volunteers have been linked to support social prescribing service users.

We feel this has been an excellent example of a partnership between a statutory NHS organisation and a Voluntary Sector organisation, which we have not experienced before on this scale. This has been due to the solid and longstanding relationship we have held with the WVCA over time, and mutual respect from both parties.

Monies left from year two of the project are to be carried over and will support further commissions for community groups.



National Lottery Heritage Grant

Project Grant from The National Lottery Heritage Fund

In October 2023, The Charity was successful in obtaining a project grant of £139,792 from The National Lottery Heritage Fund. The project bid proposed an 18-month programme of heritage and community arts activity, which would showcase The Charity's valuable heritage collection, and engage the people of Wolverhampton with the story of Wolverhampton's healthcare history. This programme was titled 'Care, Create, Conserve', arising from the A&HG's core aims and reflecting the Trust's strategic plan known as the Four Cs.

Earlier in 2023, The Charity received a donation of more than 120 medical artefacts and items of memorabilia from ex-Nurse and hospital historian Roy Stallard. In accepting this donation, The Charity and A&HG became custodians of a valuable heritage asset which has huge potential to engage, inspire, and provide reminiscence. It is for this reason that a programme revolving around heritage was developed, and an application to the Heritage Fund was pursued.

Care, Create, Conserve is multi-faceted in its aims. As well as engaging the public and offering opportunities for involvement in co-creation projects and as an Arts and Heritage Volunteer, the project grant also facilitates training and upskilling for the A&HG and the Trust in areas such as collections management, conservation, and curation. This will support The Charity in becoming safe and sustainable custodians of heritage, and provide the skills and experience needed to continue engaging the public with the story of Wolverhampton's healthcare legacy.

About The National Lottery Heritage Fund

Using money raised by the National Lottery, we inspire, lead and resource the UK's heritage to create positive and lasting change for people and communities, now and in the future. www.heritagefund.org.uk.

Follow @HeritageFundUK on Twitter, Facebook and Instagram and use #NationalLotteryHeritageFund

Since The National Lottery began in 1994, National Lottery players have raised over £43 billion for projects and more than 635,000 grants have been awarded across the UK.

NHS Charities Together Development Grant

The Charity was fortunate enough to be awarded a £30,000 development grant to support with our marketing and communications strategy. The first stage of the grant was securing a web builder to design and work with us on a standalone charity website. The company identified as best value for money, timeframe and recommendation from other local charities was Platform 81. Work started in January and the website was launched in summer 2024.

Having a standalone site will give:

Visibility and Reach: A website provides a platform for us to showcase our mission, programmes and impact. It allows us to reach a wider audience beyond our local community. When people search online for causes, they care about, a charity website ensures visibility and accessibility.

Transparency and Credibility: Having a professional website builds trust with potential donors, volunteers, and partners. Transparency is crucial in the nonprofit sector, and a well-maintained website demonstrates accountability and openness.

Fundraising and Donations: A website serves as a hub for accepting online donations. Charities can set up secure payment gateways, share donation stories, and encourage recurring contributions. It also facilitates fundraising campaigns and events.

Storytelling: Websites allow us to tell our story effectively. Compelling content, including photos, videos, and success stories allows an emotional connection with visitors. Personal narratives create empathy and encourage support.

Resource Centre: Our website is a resource hub, provides educational materials, FAQs, and information about us. This helps potential beneficiaries and supporters understand our work better.

Volunteer Recruitment: Our website will allow us to recruit volunteers. By listing volunteer opportunities and sharing testimonials from existing volunteers, we can attract passionate individuals who want to contribute their time and skills.

Advocacy and Awareness: The website can be used to raise awareness about social issues, publish articles, infographics, and reports to educate the public and advocate for change.

Event Promotion: Whether it's a fundraising gala, community clean-up, or awareness walk, a website allows charities to promote events. Visitors can find event details, register, and participate.

Impact Measurement: We can showcase our impact through data visualisation, graphs, charts, and progress reports. These help donors understand how their contributions make a difference.

Networking and Collaboration: Websites encourage networking with other nonprofits, government agencies, and corporate partners. Collaboration leads to shared resources, joint initiatives, and greater impact.

In summary, a charity website is more than just an online presence; it's a powerful tool for communication, engagement, and achieving the organisation's mission.

The next stage of the development grant will be brand awareness around the Trust and promoting the work we do.



Spend

Neonatal Unit - Cuski products – £6,924

Cuski nests, swaddle wraps and bean bags for premature babies for Neonatal positioning and development care. Alternative to swaddling for babies who do not like space around them and helps prevent flailing.



The nest gives babies the security of boundaries that are created naturally within mummy's womb, this helps to keep them snug and secure which enhances their sleep pattern sooner. For the first three months baby sleeping = baby growing.

Jaundice meter £4,125

The Jaundice Meter JM-105 accurately identifies at-risk infants as young as 24 weeks gestational age. Effective screening can decrease re-admission rates and durations of stay.



Having dependable results in seconds rather than hours helps to increase patient safety and expedite decision making. New integrated flagging feature helps keep track of patients in need of special attention and comply with jaundice management protocols.

Stock Cura chair for brain injury patients - £3,228



This offers a greater range of seat width, seat depth and back rest recline, whilst also offering more tilt in space, a greater range of floor to seat height and new and improved handle bar positioning.

Cloud Kits for children of patients with cancer – £903

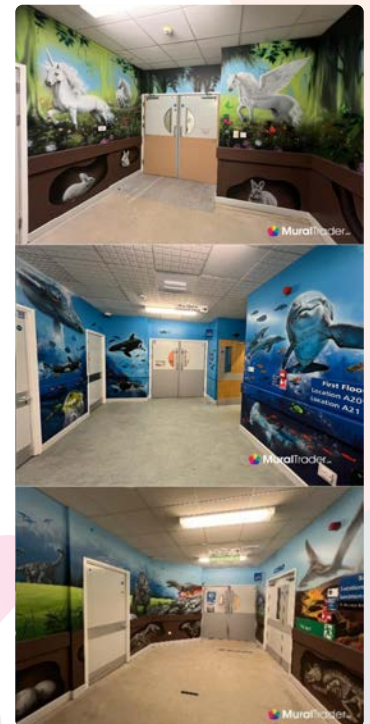
These help children affected by a parent being diagnosed with cancer. The Cancer Clouds are an award-winning group of toolkits and there are three different kits designed for different age ranges.



Each kit contains an age-appropriate set of tools designed to help children or young people to understand what cancer is, the treatments given, and the side-effects they may cause.

There are also tools to help improve communication within the family, practical tools to help manage changes in the family's routine, and tools that explore the emotional impact a cancer diagnosis brings.

Mural Artwork for paediatrics - £14, 220



Artwork was created following a consultation with our young patients asking what can be done to improve their time in hospital. Entrances to the children's department and adolescent waiting area have been transformed with artwork carried out by Mural Trader. Coming into hospital can be scary, but now children are met with beautiful colours, images and art to help relax them before entering the ward.

Quickcheck Machine for renal patients - £2,999

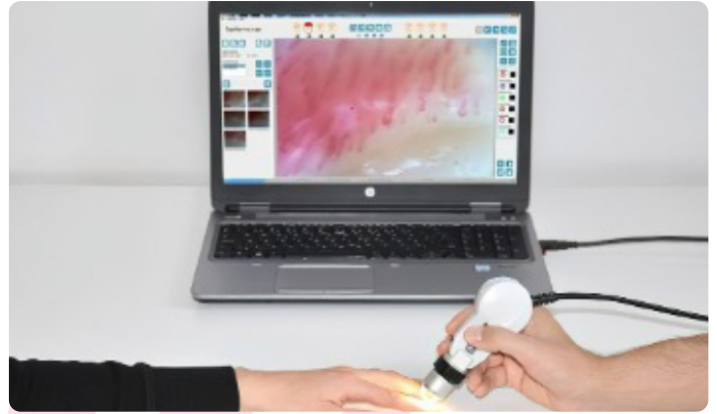


This is a device that can help speed the diagnosis of peritonitis in vulnerable kidney and liver failure patients. With results 10,000 times faster than current methods, this portable and rapid detection device now means that Nurses can carry out an instant leukocyte count at the patient's home. This is convenient for the patient and supports rapid detection and treatment pathways.

Digital Capillaroscopy £20,050 plus donation from Hibbs Lupus Trust of £16,623

Capillaroscopy is a non-invasive, easy and safe diagnostic technique designed to evaluate small vessels of the microcirculation in the nailfold. It can reveal both the general architecture of capillary rows and fine details of particular vessels.

The most important indications for performing capillaroscopy include differential diagnosis of primary and secondary Raynaud's phenomenon, as well as assessment of scleroderma spectrum disorders.



Artificial intelligence for support of outlining in radiotherapy planning - £47,388



Treatment planning is an essential step of the radiotherapy workflow. It has become more sophisticated over the past couple of decades with the help of computer science, enabling planners to design highly complex radiotherapy plans to minimise the normal tissue damage while persevering sufficient tumour control. As a result, treatment planning has become more labour intensive, requiring hours or even days of planner effort to optimise an individual patient case in a trial and error fashion. More recently, artificial intelligence has been utilised to automate and improve various aspects of medical science. For radiotherapy treatment planning, many algorithms have been developed to better support planners. These algorithms focus on automating the planning process and/or optimising dosimetric trade-offs, and they have already made great impact on improving treatment planning efficiency and plan quality consistency.

How you can support us

Getting involved and supporting your local hospital and community services couldn't be easier. You might consider attending one of our events or even host your own and help us raise vital funds.

Donations can be made in the following ways:

Direct into bank account:

Contact The Charity Team on 01902 694473 for details and reference.

By post:

Please make cheques payable to The Royal Wolverhampton NHS Trust Charity.

Please write on the back of the cheque which fund you would like to donate to, e.g. General Purposes Trust Fund, and contact the team on 01902 694473 for details of where to send to.

By a donation on our 'Just Giving' site:

<https://www.justgiving.com/royalwolvesnhstrust>



Please complete a donation form and return it along with your donation to The RWT Charity.

Did you know you can also increase your donation without having to pay more? An additional **£9,736.18** has been raised through the Gift Aid scheme in 2023/24.

How does Gift Aid work? Gift Aid is a scheme run by the government that enables charities to increase the value of donations made by reclaiming basic rate tax that has been paid on the gift. At the moment, we can claim 25p per £1 donated, so on a gift of £100, we will actually receive an extra £25, at no cost to the donor.

Great! Can I Gift Aid my donations? To qualify for Gift Aid, you need to be a UK taxpayer and have paid enough tax to cover the amount of tax reclaimed by all charities on all your donations for each tax year (6 April one year to 5 April the next). Apart from tax on income from a job or self-employment, other types that are acceptable are:

- Tax deducted at source from savings interest
- Tax on state pension and/or other pensions
- Tax on investment or rental income (including tax credits on UK dividends)
- Capital Gains Tax on gains

Other taxes such as VAT and council tax do not qualify, nor does any non-UK tax.

When completing your donation form or donating via an online platform, simply complete the gift aid declaration, provide your postal address and we'll do the rest!

Looking ahead

Our objectives for 2024-2026

We will relaunch and increase awareness of The Charity and its brand, with an integrated marketing and communications campaign including website, annual report, and storytelling

We will develop funding bids for external grant makers

We will engage staff in becoming active in a programme of annual fundraising events utilising the partnership with 'Run For Charities'

We will create strong relationships with corporate supporters across our community

We will actively encourage applications to fund projects that further enhance and improve the health and wellbeing of staff and volunteers

We will actively seek opportunities for collaboration with our colleagues from both statutory and non-statutory organisations and build and strengthen partnerships with key health and voluntary sector organisations to deliver greater impact

We will embrace the digital agenda and utilise opportunities to raise further awareness of the charity with stakeholders as well as actively support projects that embrace technology and innovative ways of working

Trustees

Custodians of the Charity

The Royal Wolverhampton NHS Trust is the Corporate Trustee of the Charitable Funds governed by the law applicable to Trusts, principally the Trustee Act 2000 and the Charities Act 2011.

The Charity has the authority to recruit up to eight Trustees who together make up the Board of Trustees. They are unpaid volunteers who set the strategy for the Charity and make sure it is implemented. Trustees elect a Chair from amongst their number who chairs the meetings of the Board of Trustees and takes a more active role in supporting the Charity Chief Executive in the management of the Charity.

Trustees are appointed under arrangements made by the Secretary of State for Health under Section 51 of the NHS Act 2006. Vacancies are advertised and all potential Trustees must be interviewed and recommended by a panel consisting of two members of The Charity and one external assessor. Candidates must show knowledge of, and an interest in, the hospital and the community it serves and be willing to give the time necessary. Trustees are also selected to give The Charity a good mix of relevant professional skills, such as finance, investment and fundraising.

Trustees serve a fixed term of no more than four years (renewable to a usual maximum of 10 years in total). New Trustees receive an induction pack consisting of the governing documents, previous Trustee reports and accounts, relevant Charity Commission guidance, and policies and procedures of The Charity. They are also given a tour of the Trust. Appropriate training is provided in areas including Charity law and administration, investment management and charity finance. The Charity's professional advisors provide helpful guidance, and membership of NHS Charities Together gives the Trustees access to regular conferences and training events.

The Charity has a Corporate Trustee: The Royal Wolverhampton NHS Trust. The members of the NHS Trust Board who served during the financial year are as shown in the table opposite;

Trustee	Role within The Royal Wolverhampton NHS Trust
Sir David Nicholson	Group Chair (from 1 April 2023)
Prof. D Loughton CBE	Group Chief Executive Officer (v)
Prof. A-M Cannaby	Group Chief Nursing Officer (v) (to August 2023)
Mr A Duffell	Group Chief People Officer
Mr J Dunn	Deputy Chair (from 30 May 2023) Non-Executive Director Chair of Finance and Productivity Committee Chair of Remuneration Committee
Mr S Evans	Group Chief Strategy Officer
Ms S Evans	Group Director of Communications and Stakeholder Engagement
Mr J Hemans	Non-Executive Director (to 24 May 2023) Chair of People and Organisational Development Committee
Ms G Nuttall	Chief Operating Officer and Deputy Chief Executive (from 15 July 2023) (v) Chair of Trust Management Committee
Dr J Odum	Group Chief Medical Officer
Dr B McKaig	Chief Medical Officer
Ms T Palmer	Director of Midwifery
Ms S Rawlings	Associate Non-Executive Director (to 6 June 2023) Chair of Trust Charity
Mr K Stringer	Group Chief Financial Officer and Group Deputy Chief Executive (from 15 July 2023) (v)
Prof. L Toner	Non-Executive Director
Ms D Hickman	Director of Nursing Chief Nursing Officer (from 15 July 2023)
Mr M Levermore	Non-Executive Director Chair of Trust Charity Committee (from 20 June 2023)
Ms A Heseltine	Associate Non-Executive Director (to 24 May 2023) Non-Executive Director (from 25 May 2023) Chair of People Committee (from June 2023)
Ms J Jones	Associate Non-Executive Director (to 15 August 2023) Non-Executive Director (from 16 August 2023) Chair of Audit Committee
Dr G Pickavance	Associate Non-Executive Director
Ms L Cowley	Non-Executive Director Chair of the Integration Committee
Mr K Bostock	Group Director of Assurance
Dr U Daraz	Associate Non-Executive Director
Ms A Harding	Associate Non-Executive Director
Lord Carter	Strategic Advisor to the Board
Stephanie Cartwright	Group Director of Place (from 24 July 2023)

How we organise The Charity

The main Charity, The Royal Wolverhampton NHS Trust Charity, registered charity number 1059467, was entered on the Central Register of Charities on 27 November 1996 in accordance with the Charities Act 2011. The Charity is constituted of circa. 98 individual funds. The notes to the accounts distinguish the types of fund held and disclose separately all material funds. Please refer to pages 66-80.

Charitable funds received by The Charity are accepted, held and administered as funds and property on trust for purposes relating to the health service in accordance with the National Health Service Act 2006 and the National Health Service and Community Care Act 1990. The Charity has no employees but reimburses the NHS Trust for the financial and other services it provides. The Charity relies on the NHS Trust to identify the appropriateness of funding requests.

The Royal Wolverhampton NHS Trust as the Corporate Trustee has devolved responsibility for the ongoing management of funds to the Charitable Funds Committee which administers the funds on behalf of the Corporate Trustee. This committee was formed in 2006.

The names of those people who served as agents for the Corporate Trustee, as permitted under the NHS Trusts (Membership and Procedures) Regulations 1990 were as follows:

- David Loughton CBE - Group Chief Executive
- Kevin Stringer - Group Chief Financial Officer
- Martin Levermore - Non-executive Director
- Sue Rawlings - Non-executive Director
- Julie Jones - Non-executive Director
- Lisa Cowley - Non-executive Director

Principal Charitable Fund Advisers to the Board

The Group Chief Executive of the NHS Trust (David Loughton CBE) and Group Chief Financial Officer (Kevin Stringer) have day to day responsibility for the management of the Charitable Funds under a scheme of delegated authority by the Corporate Trustee. They must personally and together, on behalf of the Corporate Trustee, approve all expenditure over £10,000 with an upper limit of £50,000. Expenditure in excess of £50,000 on a particular project must be authorised by the Trust Board of the Corporate Trustee.

Mr Kevin Stringer was the principal officer overseeing the day to day financial management and accounting for the Charitable Funds during the year.

Principal Office

The principal office for the Charity is:

Group Chief Financial Officer
The Royal Wolverhampton NHS Trust
Hollybush House
New Cross Hospital
Wolverhampton
WV10 0QP

Wider Networks

The RWT Charity is more than 400 NHS linked charities in England and Wales who are eligible to join NHS Charities Together. As a member charity, we have the opportunity to discuss matters of common concern and exchange information and experiences, join together with others to lobby government departments and others, and to participate in conferences and seminars which offer support and education for our staff and members of the Charitable Funds Committee.

Related Party Relationships

The Charity holds a related party relationship with The Royal Wolverhampton NHS Trust. The transactions with these parties have been disclosed in note 17 of these financial statements.

Trustees of the Charity



Professor David Loughton
CBE CIHSCM – Group Chief Executive

Appointed 2004

Professor Loughton's first Chief Executive appointment was at University Hospitals Coventry and Warwickshire NHS Trust in 1986. There he led the organisation through two hospital mergers, developed a new medical school with Warwick University and reached financial closure on a new £400m hospital.

He then started as Chief Executive of The Royal Wolverhampton NHS Trust (RWT) in 2004. He has led the organisation from one of the most financially challenged in the NHS, to being financially sound whilst at the same time gaining a national and international reputation for improving patient safety and experience. He started as Chief Executive of Walsall Healthcare NHS Trust in 2021, which has seen improvements in both staff and patient satisfaction along with the opening of a new £40m Emergency and Urgent Care Centre.

RWT hosts the National Institute for Health and Care Research (NIHR) in the West Midlands, Professor Loughton is the Chair of the West Midlands Cancer Alliance.

Committee Attendances in 2023/24: 0/3

Declaration of interests:

- National Institute for Health and Care Research – Member of Advisory Board
- Chair of West Midlands Cancer Alliance
- Group Chief Executive Officer Walsall Healthcare NHS Trust
- Companion – Institute of Health and Social Care Management



Kevin Stringer – Deputy Chief Executive and Group Chief Financial Officer from December 2022

Originally appointed 2009

Mr Stringer is a qualified accountant with the Chartered Institute of Management Accountants (CIMA) and holds a Masters qualification in Business Administration (MBA). With more than 34 years in the NHS, 21 of those as a Board Director, he has experience of commissioning and provider organisations.

His experience covers:

- Primary Care, Community Services and Commissioning (with successor organisations being Walsall CCG and Birmingham Cross-city CCG)
- Secondary and Tertiary Care (at University Hospitals of Coventry and Warwickshire, Sandwell and West Birmingham NHS Trust)
- Specialist Secondary and Tertiary Care (Birmingham Children's Hospital Foundation Trust where he helped the Trust secure FT status)
- Regional NHS Planning and Oversight (West Midlands Regional Health Authority)

His role is to provide professional advice to the Board and wider Trust to ensure delivery of the Board's financial strategy, key statutory financial targets and ensure good internal control.

He is a member and advocate for Healthcare Financial Management (HFMA) having been a past Chairman of the West Midlands Branch where he is now the Treasurer.

Committee Attendances in 2023/24: 3/3

Declaration of interests:

- Treasurer, West Midlands Branch – Healthcare Financial Management Association
- Member of CIMA (Chartered Institute of Management Accountants)
- Midlands and Lancashire Commissioning Support Unit – brother-in-law is Managing Director
- Group IT Director and SIRO at Walsall Healthcare NHS Trust (from 6 June 2022)
- Group Chief Financial Officer at Walsall Healthcare NHS Trust



Martin Levermore Non Executive Director

From 15 August 2022, originally Associate Non-Executive Director appointed 7 February 2022

Professor Martin Levermore MBE DL is a Visiting Professor for Health, Education and Life Science at Birmingham City University (BCU).

He is a founder and Chief Executive of Medical Devices Technology International Ltd (MDTi), and has been working with the NHS regionally and nationally for over the past 18 years to commercialise and bring to market innovative products and service ideas.

He has more than 18 years at Senior Board level in the Life Sciences sector and sits on the Executive Board of PIONEER as Commercial Adviser, whilst Chairing the advisory board to Health Data Research UK (HDRUK).

Currently Professor Levermore's professional area of interest is on the adoptability of agile strategies and technologies that will improve clinical utility and the equity of medical devices to provide quicker and accurate assessment and diagnosis for patients centred around the flexibility of remote management.

He holds a Senior Associateship with the Royal Society of Medicine, he is a Chartered Member of the Chartered Institute of Securities and Investment and Fellowship of the Royal Society of Arts.

He is the Independent Person for the Windrush Compensation Scheme reporting to the Home Secretary.

Professor Levermore was appointed in 2018 by Her Majesty's Lord-Lieutenant, Sir John Crabtree OBE, as a Deputy Lieutenant to the West Midlands.

Committee Attendances in 2023/24: 3/3

Declaration of interests:

- Chief Executive Officer of Medical Devices Technology International Ltd
- Vice Chair for Nehemiah United Churches Housing Association (UCHA)
- Chair of Medilink Midlands (non-paid)
- Interim Chair of New Roots Homelessness Charity (from 26/08/2020 to 31/07/2023)
- Chair of Trade and Business Birmingham Commonwealth Association (BCA)
- Executive Committee Member of the Greater Birmingham Commonwealth Chamber of Commerce
- Home Office Independent Adviser to the Windrush Compensation Scheme
- Ordinary Shares at Medical Devises Technology International Ltd
- Chair of black internship programme non-paid charitable organisation- HDRUK
- Data research committee non-paid charitable to Cancer Research UK



Sue Rawlings Non-Executive Director

From 1 October 2021. Originally appointed Non - Executive Director July 2013 to 6 June 2023

Mrs Rawlings is formerly a Chartered Certified Accountant who has worked in the public, private and voluntary sector (last position: Finance and Development Director for Groundwork Black Country, an environmental charity).

For almost 20 years, up to 2020, she was joint director of the consultancy firm RHCS, a well-established, highly skilled consultancy firm working with a range of cross sector clients from the voluntary/community, charitable and public sectors. She has extensive experience in evaluating the effectiveness of public expenditure and has worked with the British Red Cross in various parts of the country, conducting needs assessments, developing performance monitoring and carrying out evaluations.

She worked with voluntary and community sector organisations to develop their business planning, their future sustainability and identify their impact. Previously a local improvement advisor appointed via IDEa to the Regional Improvement Efficiency Partnership in the West Midlands, she is also a Trustee of both Telford Christian Council Supported Housing Charitable Company and Telford Churches Together Charity.

Committee Attendances in 2023/24: 0/0

Declaration of interests:

- Trustee and Company Director of Telford Christian Council Supported Housing – STAY started
- Trustee and Director of Faith based Charity in Telford – Telford Christian Council



Lisa Cowley Non Executive Director

Appointed 1 February 2022

Ms Cowley brings a wealth of experience gained in large, national and regional, health, social care and third sector organisations. She has held senior leadership positions, both as an employee and in a charitable Trustee capacity, ensuring she brings a strong foundation in financial, business and operational planning, project evaluation and impact monitoring, amongst other expertise.

She is particularly skilled at developing partnerships across the voluntary and public sector, including the evolution of the VCSE Alliance as part of the development of Integrated Care Systems.

Ms Cowley is Chief Executive Officer (CEO) of Beacon Vision having worked for the organisation since 2018. This is one of the region's most established and well-known health and social care charities, where she has been in post for more than four years. She has brought many positive improvements to the charity and is passionate about making a difference to the lives of people living with sight loss across the West Midlands.

In addition to her unwavering dedication to Beacon's charitable objectives, she is committed to building long-term sustainability, actively seeking new ways to improve and develop increased integrated, co-operative and progressive health and social care systems to support beneficiaries.

Previous roles have included Deputy CEO of the Black Country Living Museum, where she implemented significant change programmes and oversaw complex funding bids and projects of national heritage significance. Ms Cowley has also been involved in complex projects during her time at organisations such as the RSPB and The British Horse Society, where she developed and implemented the charity's national volunteer programme. A highlight from her earlier career includes a pivotal role in the redevelopment of the world's first 'skyscraper' in Shrewsbury.

She is originally from Wolverhampton, having returned after completing her degree at the University of Liverpool. Her personal interests include a passion for horses and horse riding.

Committee Attendances in 2023/24: 3/3

Declaration of interests:

- Healthy Communities Together Project Sponsor for Beacon Centre for the Blind
- Chief Executive for the Beacon Centre for the Blind
- Co-Owner of Ridge & Furrow Foods
- Co-Owner of Streetway House Farms
- Partner employed by Harris Allday EFG-Wealth Management arm of Private Bank
- Partner employed by HM Armed Forces



Julie Jones Non Executive Director

From 15 August 2022, originally appointed Associate Non-Executive Director 7 February 2022

Ms Jones is a fellow of the Institute of Chartered Accountants in England and Wales who, after 15 years in external audit at a leading accounting firm, has spent the last 10 years in executive finance director positions in the not for profit and public sector. She is currently the Chief Financial Officer of a secondary school academy in Solihull, and is an associate director of a company providing internal audit services to academy schools nationwide.

She has more than 20 years' experience as a Non-Executive Director in social housing and higher education and is currently a member of the Audit and Assurance Committee of whg, and Trustee and Treasurer of two local charities. She was previously the Chair of Audit Committee at Birmingham and Solihull CCG.

Committee Attendances in 2023/24: 2/3

Declaration of interests:

- Associate Director of Academy Advisory
- Member of Audit and Risk Committee whg
- Trustee of Solihull School Parents' Association
- Director of Leasehold Management Company Cranmer Court Residents Wolverhampton Limited
- Chief Financial Officer of Heart of England Academy

Structure, Governance and Management

All The Charity's funds are pooled for investment purposes and the official pooling scheme was registered with The Charity Commission on 24 June 1998.

For management purposes all funds held and received by The Charity fall into one of the following categories:

- Endowment funds - funds where the capital must be held in perpetuity and only the income generated can be used for charitable purposes
- Restricted funds - funds received which have specific restrictions set by the donor
- Unrestricted funds - funds received which have no restrictions attached to their use.

Within the unrestricted category separate designated funds have been established which reflect the wishes of donors to help named wards and departments in the hospital. Subsequent donations and gifts received by The Charity that are attributable to the already established funds are added to those fund balances. Where the donations and gifts are not attributable to already established funds, new funds are set up. In this way the Corporate Trustee fulfils the legal duty to ensure that all funds are spent in accordance with the objectives of each fund and that the wishes of donors are always considered.

Unrestricted funds form the largest category with £1,950,000 of funds at 31 March 2024. There are charitable funds for most clinical specialties (e.g. Medicine or Ophthalmology) and for some wards and departments within specialties.

Non-Executive members of the Trust Board are appointed by the NHS Appointments Commission and Executive members of the Board are subject to recruitment by the NHS Trust Board. Members of the Trust Board and the Charitable Funds Committee are not individual Trustees under Charity law but act as agents on behalf of the Corporate Trustee.

Acting for the Corporate Trustee, the objective of the Charitable Funds Committee is to provide strategic direction to The Charity and ensure that it is managed and administered in accordance with The Charity's purposes. The committee is responsible for:

- Determining a charitable funds strategy and setting annual objectives
- Ensuring that charitable funds are managed in line with the measures and actions set out in the strategy
- Ensuring any fundraising elements of the strategy work within recognised good practice frameworks and identify methods of fundraising appropriate for The Charity
- Determining a charitable funds investment policy and monitoring performance of any investments made in line with governing documents and the Trustee Act 2000
- Appointing and considering the performance of any investment advisors or managers
- Ensuring Trust policies and procedures are adequate, that financial controls are in place to account for all funds received and that governance arrangements are appropriate and effective
- Ensuring that timely annual reports and accounts are produced and an unqualified external audit opinion is received.

The accounting records and the day-to-day administration of the funds are dealt with by the Finance Department at The Clinical Skills and Corporate Services Centre, New Cross Hospital, Wolverhampton WV10 0QP.

Risk Management

The major risks to which the Charity is exposed have been identified and considered. They have been reviewed and systems established to mitigate those risks. The Trustee is confident that reliance can be placed on the management arrangements in place, which include internal and external audit services, to minimise any risk to the funds. The most significant risks identified are the possible losses from a fall in the value of the investments and the level of reserves available to mitigate the impact of such losses.

The investments are held by the Investment Fund Managers who act in accordance with the agreed investment policy and are subject to regular review. In addition, unrealised gains and losses are allocated to funds at agreed intervals. Procedures in place ensure that both spending and firm financial commitments remain in line with income. Income is covered by the Standing Financial Instructions and there is an agreed boundary for the receipt of donations. This policy has been communicated to staff.

There is an agreed expenditure and reserves policy together with a tight approval procedure which gives the Corporate Trustee confidence that the expenditure will remain within the limits of the Charity's resources.

Objectives and activities for the public benefit

This can be found at the beginning of this report on page 5.

Investment Management

Surplus funds are pooled and invested in order to maximise income, whilst minimising risk for the Charity.

Income and cash, gains and losses are distributed equitably across the Charity funds. The income from investments amounted to £108,161 (£101,068 in 2022/23). The investment management fee has previously been netted off against the income earned, but these are now shown as gross.

Throughout 2023/24 the investments were split into two portfolios:

A Shorter Term Portfolio which aims to achieve a consistently attractive level of income, coupled with the potential for long-term capital appreciation whilst aiming to preserve the value of the capital over the short-term

A Longer Term Portfolio which is invested to achieve long-term capital and income growth. Achieved with a broadly diversified global portfolio covering the world's principal stock, bond and currency markets, together with investments in "alternative" assets such as property and hedge funds.

During the year, the Trustees requested both the Shorter and Longer Term Portfolios continue to hold a 50:50 split of the overall investments.

At the year end, the Shorter Term Portfolio held £1,080,959 and the Longer Term Portfolio held £1,489,728. Both portfolio's were split between investment types.

The two portfolios together were split in the following way:

- £1,347,050 – 52.4% (2023: £1,106,793 – 45.2%) was invested in equity based investments
- £1,130,558 – 44.0% (2023: £1,265,201 – 51.6%) was invested in longer fixed interest bearing government and other securities and
- £93,079 – 3.6% (2023: £77,343 – 3.2%) was held as liquid assets including cash. This total sum invested increased by £121,348 from 2022/23

The Charity does not own any investment properties.

The Charity has an investment policy that was reviewed in January 2024. See page 59.

A reflection on the last 12 months from Sarasin and Partners LLP

As at 31 March, the total value of both portfolios was £2,570,687. The Royal Wolverhampton NHS Trust Long Term Portfolio returned 11.2% against our composite benchmark return of 15.5%, although encouragingly performance was well in excess of the long-term UK CPI +4% objective (+7.6%) and comfortably ahead of the ARC Steady Growth Charity peer group (+9.4%) of other charity investors adopting a comparable amount of risk.

Despite significant geopolitical and economic turbulence, equity markets emerged as the winning asset class over the 12 months. Our decision to reduce our UK equity allocation and adopt a fully global approach was positive for the portfolio, with global equities (from 1st June to end 2023) increasing by 10.3% in contrast with the UK equity index that gained 5.8%. The extraordinary growth of the 'Magnificent 7' has meant that the upward trajectory of equity markets has been focused on a narrow range of large US technology-led companies, exposed to the AI and Large Language Model phenomenon. Whilst this has been a challenge for active investment managers of well-diversified portfolios, we have participated in the majority of this rise, owning the shares of six of those seven businesses.

By the end of September, UK headline inflation rates had almost halved from their peak in 2022. This resulted in positive returns from corporate bonds, where we had been rebuilding exposure since the start of the year. Over the final quarter of 2023, fixed interest investments generated the strongest absolute returns as bond yields fell, justifying our increased allocation. Over the rolling year period, our fixed interest allocation surpassed the return of its corresponding benchmark and, in spite of the move into lower-yielding securities in 2023, the portfolio actually performed better than expected from an income perspective. As a consequence, we increased the final quarter distribution from the Sarasin Endowments Fund, making 2023's distribution 3% higher than that of 2022.

Alternative assets, which represent just 6.5% of the portfolio, have been more challenged. Whilst our commodity exposure (predominantly gold) performed well - the positive run for gold in 2023 continued into the first quarter of 2024 - sadly this was not sufficient to offset the continued weakness in infrastructure and renewable energy assets. In a higher interest rate environment, these investments have struggled. Their performance remains the main driver of relative underperformance, due to the 'cash + 2%' benchmark which we use as a comparator. Critically, we expect capital values to recover over the period ahead as interest rates and power prices stabilise.

Overall, while the outlook for equity markets in 2024 remains positive, driven by expectations for lower interest rates and continued innovation in the technology sector, it is essential to remain cautious and selective, considering the varied performance and intrinsic values of individual companies. Embracing uncertainty and conducting thorough analysis will be key to navigating the evolving investment landscape effectively over the months ahead.

Policies

Investment Policy

The Royal Wolverhampton NHS Trust Charity seeks to produce the best financial return within an acceptable level of risk.

The investment objective for the long term portfolio is to generate a return in excess of inflation over the long term whilst generating an income to support the ongoing activities of The Royal Wolverhampton NHS Trust Charity.

The investment objective for the short term portfolio is to preserve the capital value with a minimum level of risk. Assets should be readily available to meet unanticipated cash flow requirements.

The Royal Wolverhampton NHS Trust Charity has approximately a 50/50 split for investments between long term and short term, in order that unanticipated cash flow needs can be met.

The Charity's ethical investment policy precludes direct or indirect investment in companies that generate more than 10% of revenues from alcohol, armaments, gambling, pornography and will not invest in tobacco.

Expenditure policy

The charitable funds that the Charity manages, and from which grants are made, are held as endowment funds (expendable or permanent), restricted funds and unrestricted funds (designated or non-designated).

It is the Trustees' policy to ensure that all grants made from these funds are used in accordance with the purposes of the individual fund and The Royal Wolverhampton NHS Trust Charity's purposes and aims.

Individual funds' purposes include research, equipment, and patient and staff welfare.

The definitions of endowment, restricted and unrestricted funds are detailed below:

- Endowment funds – funds where the capital must be held in perpetuity and only the income generated can be used for charitable purposes
- Restricted funds – fund received which have specific restrictions set by the donor
- Unrestricted funds – funds received which have no restrictions attached to their use.

All of the different types of funds have fund advisors who facilitate local decision making and offer expertise in the particular area of the fund.

The fund advisors have delegated powers and responsibility to authorise expenditure in line with the Trust's Authorised Limits Schedule contained within the Standing Financial Instructions (SFIs). The fund advisors can make recommendations on how to spend the money within their designated area up to a level of £5,000 per transaction subject to any specific donor wishes. The Deputy Chief Operating Officers have delegated powers and responsibility to authorise transactions up to £10,000. For expenditure in excess of these limits they make recommendations to the Chief Executive and Chief Financial Officer who have authority limits up to £50,000. Any transactions over this limit must go to the Trust Board for authorisation.

All of The Royal Wolverhampton NHS Trust Charity's restricted and unrestricted funds can be spent at any time. Grants from these funds are applied for by fund advisors

Reserves policy

The Corporate Trustee acknowledges that it is the donors' intention that their contributions be used as soon as possible to enhance the service provided by the Trust. Consequently, it is the policy of the Charity that significant reserves are not held. The Charity does not intend to increase fund balances unless this is as a result of significant donations or legacies. From time to time, however, balances are held in particular areas until sufficient funds have been donated to make specific purchases.

The Trustee has established a reserves policy as part of their plans to provide long term support to the services provided by The Royal Wolverhampton NHS Trust. The Trustee calculates the reserves as that part of the Charity's unrestricted income funds that is freely available, after taking account of the designated funds, which have been earmarked for specific service purposes, in accordance with the stated Charity Objectives.

Total funds of the charity were £2,822,000 (2023 £2,725,000) of which £1,950,000 (2023: £1,790,000) are unrestricted funds, £790,000 (2023 £853,000) restricted funds and £82,000 (2023: £82,000) were endowment funds

The free reserves currently stand at £346,000 and are calculated as follows:

Total unrestricted funds £1,950,000

Less designated funds (£1,604,000)

Total free reserves £346,000

The Trustees intend that designated funds are spent within a reasonable period of receipt and therefore, foresee a need only to maintain reserves sufficient to provide certainty of funding to cover the administrative, fundraising and governance costs of the Charity in the short term. The Trustee aims to maintain free reserves in unrestricted funds at a level which equates to approximately a year of non-designated, unrestricted charitable expenditure. The Trustee considers that this level will provide sufficient funds in the short term, to cover costs in the event of unforeseen circumstances which prevented the operation of the Charity in the longer term.

The Trustee reviews the balance held in designated funds, in accordance with the provisions of the NHS Acts relating to charitable funds, to determine whether these funds are likely to be committed in the near future and the extent to which there is a continuing need identified for any particular designated fund(s). Any inactive funds are closed and transferred appropriately. Additionally, within the level of designated funds held, the Trustee ensures that there are sufficient funds held to cover a fluctuation in the value of funds held in investments.

The policies specific to the Charity reserves are as follows:

To maintain systems to forecast levels of expenditure and income to determine reserve requirements

To ensure the level of reserves are secured

To monitor and review the policy periodically to ensure it remains suitable for the Charity's need

The Corporate Trustee has reviewed the reserves policy in the light of the Charity Commission's published guidance CC19 – Charities' Reserves.

Further details

Principal professional advisers

Auditors - External

WR Partners
Belmont House
Shrewsbury Business Park
Shrewsbury
SY2 6LG

Auditors - Internal

RSM UK
Festival Way
Festival Park
Stoke-on-Trent
ST1 5BB

Bankers

Co-operative Bank plc
1-2 Dudley Street
Wolverhampton
WV1 3EN

Solicitors

Browne Jacobson
44 Castle Gate
Nottingham
NG1 7BJ


Investment Fund Managers

Sarasin & Partners LLP
Juxon House
100 St Paul's Churchyard
London
EC4M 8BU

Full accounts

This annual report comments on some of the features of the full accounts which are provided on the following pages for your information. Copies of the full accounts have been lodged with the Charity Commission and carry an unqualified audit report.

The text and accounts shown in this report were approved by the Trustees on 8 November 2024 and is signed on their behalf by the Chair.



Martin Levermore -
Chair of the Charitable Funds Committee



Statement of Trustees' responsibilities

The Trustees are responsible for preparing the Trustees' report and the financial statements in accordance with applicable law and United Kingdom Accounting Standards (United Kingdom Generally Accepted Accounting Practice).

The law applicable to charities in England and Wales requires the Trustees to prepare financial statements for each financial year which give a true and fair view of the state of affairs of the Charity and of its incoming resources and application of resources, including its income and expenditure, for that period. In preparing these financial statements, the Trustees are required to:

- Select suitable accounting policies and then apply them consistently;
- Observe the methods and principles of the Charities SORP (FRS 102);
- Make judgments and accounting estimates that are reasonable and prudent;
- State whether applicable UK Accounting Standards (FRS 102) have been followed, subject to any
- Ensure material departures are disclosed and explained in the financial statements;
- Prepare the financial statements on the going concern basis unless it is inappropriate to presume that the Charity will continue in business.

The Trustees are responsible for keeping adequate accounting records that are sufficient to show and explain the Charity's transactions and disclose with reasonable accuracy at any time the financial position of the Charity and enable them to ensure that the financial statements comply with the Charities Act 2011, the Charity (Accounts and Reports) Regulations 2008 and the provisions of the Trust deed. They are also responsible for safeguarding the assets of the Charity and hence for taking reasonable steps for the prevention and detection of fraud and other irregularities.

Disclosure of information to auditors

Each of the persons who are Trustees at the time when this Trustees' report is approved has confirmed that:

- So far as that Trustee is aware, there is no relevant audit information of which The Charity's auditors are unaware, and
- That Trustee has taken all the steps that ought to have been taken as a Trustee in order to be aware of any relevant audit information and to establish that the charity's auditors are aware of that information.

Approved by order of the members of the board of Trustees on 8 November 2024 and signed on their behalf by:

Mlevermore

Martin Levermore

Chair of the Charitable Funds Committee

Independent Auditors Report to the Trustees of the Royal Wolverhampton NHS Trust Charity

Opinion

We have audited the financial statements of The Royal Wolverhampton NHS Trust Charity (the 'charity') for the year ended 31 March 2024 which comprise the Statement of financial activities, the balance sheet, the statement of cash flows and the related notes, including significant accounting policies. The financial reporting framework that has been applied in their preparation is applicable law and United Kingdom Accounting Standards, including Financial Reporting Standard 102 The Financial Reporting Standard applicable in the UK and Republic of Ireland (United Kingdom Generally Accepted Accounting Practice).

In our opinion the financial statements:

- Give a true and fair view of the state of the charitable company's affairs as at 31 March 2024, and of its incoming resources and application of resources, including its income and expenditure, for the year then ended;
- Have been properly prepared in accordance with United Kingdom Generally Accepted Accounting Practice; and
- Have been prepared in accordance with the requirements of the Charities Act 2011.

Basis for opinion

We conducted our audit in accordance with International Standards on Auditing (UK) (ISAs (UK)) and applicable law. Our responsibilities under those standards are further described in the Auditor's responsibilities for the audit of the financial statements section of our report. We are independent of the charitable company in accordance with the ethical requirements that are relevant to our audit of the financial statements in the UK, including the FRC's Ethical Standard, and we have fulfilled our other ethical responsibilities in accordance with these requirements. We believe that the audit evidence we have obtained is sufficient and appropriate to provide a basis for our opinion.

Conclusions relating to going concern

In auditing the financial statements, we have concluded that the trustees' use of the going concern basis of accounting in the preparation of the financial statements is appropriate.

Based on the work we have performed, we have not identified any material uncertainties relating to events or conditions that, individually or collectively, may cast significant doubt on the charitable company's ability to continue as a going concern for a period of at least twelve months from when the financial statements are authorised for issue.

Our responsibilities and the responsibilities of the trustees with respect to going concern are described in the relevant sections of this report.

Other information

The other information comprises the information included in the trustees' annual report, other than the financial statements and our auditor's report thereon. The trustees are responsible for the other information contained within the annual report. Our opinion on the financial statements does not cover the other information and, except to the extent otherwise explicitly stated in our report, we do not express any form of assurance conclusion thereon. Our responsibility is to read the other information and, in doing so, consider whether the other information is materially inconsistent with the financial statements or our knowledge obtained in the course of the audit or otherwise appears to be materially misstated.

If we identify such material inconsistencies or apparent material misstatements, we are required to determine whether this gives rise to a material misstatement in the financial statements themselves. If, based on the work we have performed, we conclude that there is a material misstatement of this other information, we are required to report that fact.

We have nothing to report in this regard.

Matters on which we are required to report by exception

In the light of the knowledge and understanding of the charitable company and its environment obtained in the course of the audit, we have not identified material misstatements in the directors' report. We have nothing to report in respect of the following matters in relation to which the Charities (Accounts and Reports) Regulations 2008 requires us to report to you if, in our opinion:

- Adequate accounting records have not been kept, or returns adequate for our audit have not been received from branches not visited by us; or
- The financial statements are not in agreement with the accounting records and returns; or
- Certain disclosures of directors' remuneration specified by law are not made; or
- We have not received all the information and explanations we require for our audit

Responsibilities of trustees

As explained more fully in the trustees' responsibilities statement, the trustees are responsible for the preparation of the financial statements and for being satisfied that they give a true and fair view, and for such internal control as the trustees determine is necessary to enable the preparation of financial statements that are free from material misstatement, whether due to fraud or error.

In preparing the financial statements, the trustees are responsible for assessing the charity's ability to continue as a going concern, disclosing, as applicable, matters related to going concern and using the going concern basis of accounting unless the trustees either intend to liquidate the charity or to cease operations, or have no realistic alternative but to do so.

Auditor's responsibilities for the audit of the financial statements

Our objectives are to obtain reasonable assurance about whether the financial statements as a whole are free from material misstatement, whether due to fraud or error, and to issue an auditor's report that includes our opinion. Reasonable assurance is a high level of assurance, but is not a guarantee that an audit conducted in accordance with ISAs (UK) will always detect a material misstatement when it exists. Misstatements can arise from fraud or error and are considered material if, individually or in the aggregate, they could reasonably be expected to influence the economic decisions of users taken on the basis of these financial statements.

Irregularities, including fraud, are instances of non-compliance with laws and regulations. We design procedures in line with our responsibilities, outlined above, to detect material misstatements in respect of irregularities, including fraud. The extent to which our procedures are capable of detecting irregularities, including fraud is detailed below:

We have reviewed the susceptibility of the charity's financial statements to material misstatement and identified the principal's risks, implementing a series of testing procedures to provide us with sufficient comfort to issue our opinion.

We reviewed the charities regulatory environment to ensure we could that it had acted in accordance with the framework relevant to the charity and its environment and identify any instances on non-compliance.

We also assessed the charity's internal control procedures to ensure we could appropriately scrutinise these controls and establish whether our understanding of the control environment was sufficient to supplement our additional testing procedures.

The engagement team consisted of a team that the engagement partner believes is equipped with the relevant level of technical and charity awareness to carry out our work to the required standard.

A further description of our responsibilities is available on the Financial Reporting Council's website at: www.frc.org.uk/auditorsresponsibilities. This description forms part of our auditor's report.

We communicate with those charged with governance regarding, among other matters, the planned scope and timing of the audit and significant audit findings, including any significant deficiencies in internal control that we identify during our audit.

Use of our report

This report is made solely to the charity's trustees, as a body, in accordance with Part 4 of the Charities (Accounts and Reports) Regulations 2008. Our audit work has been undertaken so that we might state to the charitable company's members those matters we are required to state to them in an auditor's report and for no other purpose. To the fullest extent permitted by law, we do not accept or assume responsibility to anyone other than the charitable company and the charitable company's members as a body, for our audit work, for this report, or for the opinions we have formed.

WR Partners

For and on behalf of WR Partners

Chartered Accountants & Statutory Auditors

Belmont House

Shrewsbury Business Park

Shrewsbury

Shropshire

SY2 6LG

WR Partners

6th November 2024

Statement of Financial Activities incorporating income and expenditure account for the year ended 31 March 2024

	Note	Unrestricted funds £000	Restricted funds £000	Endowment funds £000	2023/24 Total funds £000	2022/23 Total funds £000
Incoming resources						
Voluntary income:						
Donations and legacies	3	290	139	-	429	637
Grants	3	-	186	-	186	59
Other trading activities	3	87	7	-	94	84
Investments	12	62	46	-	108	101
Total incoming resources		439	378	-	817	881
Expenditure on:						
Raising funds	4	(183)	(27)	-	(210)	(170)
Charitable activities	4	(431)	(198)	-	(629)	(773)
Other expenditure		(2)	-	-	(2)	(1)
Total expenditure		(616)	(225)	-	(841)	(944)
Net gains/(losses) on investment		84	37	-	121	(243)
Net income/expenditure		(94)	191	-	97	(306)
Transfer between funds		252	(252)	-	-	-
Net movements in funds		159	(62)	-	97	(306)
Reconciliation of funds:						
Total funds brought forward		1,791	852	82	2,725	3,031
Fund balances carried forward at 31 March 2024		1,950	790	82	2,822	2,725

2022/23 figures have been restated to reflect the change in accounting practice for the Investment Management Fee. The Investment Management fee has previously been netted off against the income earned but this is now shown as gross.

Balance Sheet as at 31 March 2024

Note	Unrestricted funds	Restricted funds	Endowment funds	2023/24 Total funds	2022/23 Total funds	
	£000	£000	£000	£000	£000	
Fixed assets						
Investments	11	1,714	775	82	2,571	2,449
Total fixed assets		1,714	775	82	2,571	2,449
Current assets						
Debtors	13	35	15	-	50	45
Cash and cash equivalents	14	372	-	-	372	390
Total current assets		407	15	-	422	436
Creditors: Amounts falling due within one year	15	(171)	-	-	(171)	(160)
Net current assets/(liabilities)		236	15	-	251	276
Total assets less current liabilities		1,950	790	82	2,822	2,725
Net assets		1,950	790	82	2,822	2,725
The funds of The Charity						
Endowment funds	16	-	-	82	82	82
Restricted income funds	16	-	790	-	790	852
Unrestricted income funds	16	1,950	-	-	1,950	1,791
Total Charity funds		1,950	790	82	2,822	2,725

Reconciliation of net income/(expenditure) to net cash flow from operating activities

	Note	2024 £000	2023 £000
Net income/(expenditure) for 2023/24 (as per the Statement of Financial Activities)		97	(306)
Adjustment for:			
(Gains)/losses on investments		(121)	243
Dividends, interest and rents from investments	12	(108)	(82)
(Increase)/decrease in debtors		(5)	(4)
Increase/(decrease) in creditors		11	(349)
Net cash provided by (used in) operating activities		(126)	(498)
Cash Flow		Total funds 2023/24 £000	Total funds 2022/23 £000
Cash flows from operating activities:			
Net cash provided by (used in) operating activities		(126)	(498)
Cash flows from investing activities:			
Dividends, interest and rents from investments	12	108	82
Net cash provided by (used in) investing activities		108	82
Change in cash and cash equivalents in the reporting period		(18)	(416)
Cash and cash equivalents at the beginning of the reporting period		390	806
Cash and cash equivalents at the end of the reporting period		372	390

1. General information

The Royal Wolverhampton NHS Trust Charity is an unincorporated charity in England. The address of the registered office is given in the charity information on page 52 of this report.

2. Accounting policies

a) Basis of preparation

The financial statements have been prepared in accordance with the Charities SORP (FRS 102) - Accounting and Reporting by Charities: Statement of Recommended Practice applicable to charities preparing their accounts in accordance with the Financial Reporting Standard applicable in the UK and Republic of Ireland (FRS 102)(issued in October 2019), the Financial Reporting Standard applicable in the UK and Republic of Ireland (FRS 102) and the Charities Act 2011.

The financial statements have been prepared to give a 'true and fair' view and have departed from the Charities (Accounts and Reports) Regulations 2008 only to the extent required to provide a 'true and fair' view. This departure has involved following the Charities SORP (FRS 102) published in October 2019 rather than the Accounting and Reporting by Charities: Statement of Recommended Practice effective from 1 April 2005 which has since been withdrawn.

The Royal Wolverhampton NHS Trust Charity meets the definition of a public benefit entity under FRS 102. Assets and liabilities are initially recognised at historical cost or transaction value unless otherwise stated in the relevant accounting policy.

After making enquires, the Trustees have a reasonable expectation that the Charity has adequate resources to continue in operational existence for the foreseeable future. The Charity therefore continues to adopt the going concern basis in preparing its financial statements.

The key risks to the Charity's continuing going concern status are a fall in income from donations or investment income but the Trustee has arrangements in place to mitigate those risks (see the risk management (page 57) and reserves (page 59) sections of the annual report for more information).

b) Funds structure

Where there is a legal restriction on the purpose to which a fund may be put, the fund is classified either as:

- A restricted fund or
- An endowment fund

Restricted funds are those where the donor has provided for the donation to be spent in furtherance of a specified charitable purpose.

Endowment funds arise when the donor has expressly provided that the gift is to be invested and only the income of the fund may be spent. These funds are sub analysed between those where the Trustee has the discretion to spend the capital (expendable endowment) and those where there is no discretion to expend the capital (permanent endowment).

The Charity has three permanent endowment funds, all of which are invested within the long term portfolio and the return from this investment is transferred into either an unrestricted fund or a restricted fund dependent on the restrictions placed on the fund by the donor.

c) Incoming resources

All income is recognised once the Charity has entitlement to the income, it is probable (more likely than not) that the income will be received and the amount of income receivable can be measured reliably.



Where there are terms or conditions attached to incoming resources, particularly grants, then these terms or conditions must be met before the income is recognised as the entitlement condition will not be satisfied until that point. Where terms or conditions have not been met then the relevant income is not recognised in the year but deferred and shown on the balance sheet as deferred income.

d) Gifts in kind

Gifts in kind, such as food and care packages are not accounted for when they are accepted and immediately distributed unless a single donation is material.

Gifts of tangible assets such as microwaves and fridges are recognised as a donation at fair value (market price) on receipt and charitable expenditure when they are distributed.

Where gifts in kind are held before being distributed to beneficiaries, they are recognised at fair value as stock until they are distributed.

e) Incoming resources from legacies

The recognition of income from legacies is dependent on establishing entitlement, the probability of receipt and the ability to estimate with sufficient accuracy the amount receivable. Evidence of entitlement to a legacy exists when the Charity has sufficient evidence that a gift has been left to it (through knowledge of the existence of a valid will and the death of the benefactor) and the executor is satisfied that the property in question will not be required to satisfy claims in the estate. Receipt of a legacy must be recognised when it is probable that it will be received and the fair value of the amount receivable, which will generally be the expected cash amount to be distributed to the Charity, can be reliably measured.

f) Incoming resources from endowment funds

The incoming resources received from the invested endowment fund are transferred to the restricted or unrestricted fund as per the donors request.

g) Other incoming resources

Income tax recoverable in relation to donations received under Gift Aid or deeds of covenant is recognised at the time of the donation.

Other income is recognised in the period in which it is receivable and to the extent the goods have been provided or on completion of the service.

h) Resources expended and irrecoverable VAT

All expenditure is accounted for on an accruals basis and has been classified under headings that aggregate all costs related to each category of expense shown in the Statement of Financial Activities. Expenditure is recognised when the following criteria are met:

- There is a present legal or constructive obligation resulting from a past event
- It is more likely than not that a transfer of benefits (usually a cash payment) will be required in settlement
- The amount of the obligation can be measured or estimated reliably.

Irrecoverable VAT is charged against the category of resources expended for which it was incurred.

i) Recognition of expenditure and associated liabilities as a result of grant

The Charity is not a grant giving organisation.

j) Allocation of support costs

Support costs are those costs which do not relate directly to a single activity. These include some staff recharges, costs of administration, external audit costs and IT support. Support costs have been apportioned between fundraising costs and charitable activities on an appropriate basis. The analysis of support costs and the bases of apportionment applied are shown in note 6.

k) Fundraising costs

The costs of generating funds are those costs attributable to generating income for the charity, other than those costs incurred in undertaking charitable activities or the costs incurred in undertaking trading activities in furtherance of The Charity's objects. The costs of generating funds represent fundraising costs which include expenses for fundraising activities and a recharge paid to a related party, The Royal Wolverhampton NHS Trust (see note 17). The recharge is used to pay the salaries and support costs of the Charity's Fundraising Team.

l) Charitable activities

Costs of charitable activities comprise all costs incurred in the pursuit of the charitable objects of the charity. These costs, where not wholly attributable, are apportioned between the categories of charitable expenditure in addition to the direct costs. The total costs of each category of charitable expenditure include an apportionment of support costs as shown in note 6.

m) Fixed asset investments

Investments are a form of basic financial instrument. Fixed asset investments are initially recognised at their transaction value and are subsequently measured at their fair value (market value) as at the balance sheet date. The Statement of Financial Activities includes the net gains and losses arising on revaluation and disposals throughout the year. Quoted stocks and shares are included in the Balance Sheet at the current market value quoted by the investment analyst, excluding dividend. Other investments are included at the Trustee's best estimate of market value.

The main form of financial risk faced by the charity is that of volatility in equity markets and investment markets due to wider economic conditions, the attitude of investors to investment risk, and changes in sentiment concerning equities and within particular sectors or sub sectors. Further information on the RWT Charity investments can be found in note 11.

n) Debtors

Debtors are amounts owed to the charity. They are measured on the basis of their recoverable amount.

o) Cash and cash equivalents

Cash at bank and in hand is held to meet the day to day running costs of the charity as they fall due. Cash equivalents are short term, highly liquid investments, usually in 90-day notice interest bearing savings accounts.

p) Creditors

Creditors are amounts owed by the charity. They are measured at the amount that The Charity expects to have to pay to settle the debt.

Amounts which are owed in more than a year are shown as long-term creditors.

q) Realised gains and losses

All gains and losses are taken to the Statement of Financial Activities as they arise. Realised gains and losses on investments are calculated as the difference between sales proceeds and opening carrying value (purchase date if later). Unrealised gains and losses are calculated as the difference between the market value at the year end and opening carrying value (or purchase date if later).

r) Staff costs and pensions

The Charity does not have any staff. All staffing costs are recharged from The Royal Wolverhampton NHS Trust.

3. Income

a) Analysis of Donations, Legacies and Grants

	Unrestricted funds £000	Restricted funds £000	Total 2023/24 £000	Total 2022/23 £000
Donations from individuals	169	3	172	130
Corporate donations	30	1	31	52
Legacies	91	135	226	455
Grants	-	186	186	59
	290	325	615	696
<i>2022/23 Total funds £000</i>	188	508	696	

Donations from individuals are gifts from members of the public, relatives of patients, patients and staff.

Donations of goods, to the value of £18,001 2023/24 (£24,472 2022/23), are included in income valued at their market value. All of these donations have been distributed during the year.

b) Analysis of Other Trading Activities

	Unrestricted funds £000	Restricted funds £000	Total 2023/24 £000	Total 2022/23 £000
Community	29	7	36	33
Individuals	1	-	1	11
Events	57	-	57	40
Corporate	-	-	-	-
	87	7	94	84
<i>2022/23 Total funds £000</i>	80	4	84	

4. Expenditure

a) Analysis of Raising Funds

	Unrestricted funds £000	Restricted funds £000	Total 2023/24 £000	Total 2022/23 £000
Fundraisers' costs	151	16	167	130
Investment Management	11	7	18	19
Support costs	21	4	25	21
	183	27	210	170
2022/23 Total funds £000	170	0	170	

2022/23 figures have been restated to reflect the change in accounting practice for the Investment Management Fee.

b) Analysis of Charitable Activities

	Grant funded activity £000	Support Costs £000	Total funds 2023/24 £000	Total funds 2022/23 £000
Purchase of new medical equipment	85	-	85	40
Patients welfare and amenities	398	57	455	208
Staff welfare and amenities	68	10	78	59
Building work	-	-	-	464
Research	12	-	12	1
	563	67	630	773
2022/23 Total funds £000	726	47	773	

5. Grant funding

The charity did not undertake any direct charitable activities on its own account during the year. All of the charitable expenditure was in the form of grant funding.

Grants were approved in favour of the partner organisations, principally the Royal Wolverhampton NHS Trust to carry out activities that will benefit patients and their families. The Charity incurred expenditure with third parties in pursuance of those grants or reimbursed expenditure incurred by them.

6. Allocation of support costs and overheads

Support and overhead costs are allocated between fundraising activities and charitable activities.

The bases of allocation used are as follows:

- Time: based on timesheets of those supporting the Charity.
- Direct allocation: where a cost is wholly attributable to a particular activity.
- Expenditure: this is a proportion based on the fund balance at the start of the year. This is used where the Trustee considers this is a more equitable treatment to avoid disadvantaging funds with high volume, low value transactions.
- Salaries: this is proportionate to staff salaries where costs are related to the employed staff.

	Raising funds £000	Charitable activities £000	Total 2023/24 £000	Total 2022/23 £000	Basis
Internal audit	-	-	-	3	Direct
External audit	2	6	8	8	Direct
Financial services	21	56	77	52	Time
Support admin costs	-	-	-	-	Time
Other administration costs	2	5	7	5	Expenditure
	25	67	92	68	
<i>2022/23 Total funds £000</i>	<i>21</i>	<i>47</i>	<i>68</i>		

7. Trustee remuneration, benefits and expenses

Remuneration for the Board of The Royal Wolverhampton NHS Trust is provided in The Royal Wolverhampton NHS Trust 2023/24 published Accounts available on the Trust website, and, as such remuneration and expenses with regards to the Charitable Funds Committee are not separately identified.

8. Analysis of staff costs and remuneration of key management personnel

The Charity has no employees (2022/23 none). Costs for staff incurred by The Royal Wolverhampton NHS Trust are recharged to the Charity in the form of a Financial Services management fee along with the salaries for the Fundraising Team. The management fee for the year amounted to £77,134 (2022/23 £52,252) following the introduction of the Charity Finance & Assurance Manager post in year and the Fundraisers' salaries amounted to £129,213 (2022/23 £111,649). The Charity does not directly pay salaries national insurance or pension contributions (2022/23 £Nil).

Analysis of staff costs recharged by The Royal Wolverhampton NHS Trust

Analysis of staff costs recharged by The Royal Wolverhampton NHS Trust

	2024 £	2023 £
Fundraisers' salary	129	112
Financial services	77	52
	206	164

9. Transfers

There were transfers of £255,196 (2022/23 £41,664) during the year, with £251,671 of this being between New Cross General Purpose Legacies and RWT Legacies, whilst £2,052 was to Physio and OT Rehab from West Park and Neuro Rehab Trust funds.

10. Auditor's remuneration

External auditors' remuneration of £7,650 including VAT (2022/23 £7,800 including VAT) related solely to the audit with no other additional work undertaken (2022/23 £Nil).

11. Investments

Movement in fixed asset investments	31 March 2024	31 March 2023
	£000	£000
Market value at 1 April	2,449	2,691
Less disposals at carrying value	-	-
Add: additions to investments at cost	-	-
Add net gain (loss) on revaluation	121	(242)
Market value as at 31 March	2,571	2,449

Net movement is made up of the revaluation of investments (£121,348) at the year end and £18.75 increase in the balance of cash held to £29.10 as part of the investment portfolio.

Analysis of market value	31 March 2024	31 March 2023
	£000	£000
Investments listed on Stock Exchange	2,571	2,449
	2,571	2,449

Fixed asset investment by type	31 March 2024	31 March 2024	31 March 2023	31 March 2023
	£000	%	£000	%
Equities	1,347	52.4	1,107	45.2
Fixed Income (Inc Bonds)	895	34.8	894	36.5
Property	53	2.1	61	2.5
Other	183	7.1	310	12.6
Liquid Assets (Inc Cash)	93	3.6	77	3.2
	2,571	100	2,449	100

The Trustees consider the value of the investments to be supported by their underlying assets.



12. Analysis of gross income from investments and cash on deposit

	31 March 2024	31 March 2023
	£000	£000
Investments listed on Stock Exchange	108	101
	108	101

2022/23 figures have been restated to reflect the change in accounting practice for the Investment Management Fee.

13. Debtors

	31 March 2024	31 March 2023
	£000	£000
Amounts falling due within one year:		
Prepayments and accrued income	50	45
	50	45

14. Cash and cash equivalents

	31 March 2024	31 March 2023
	£000	£000
The Co-operative Bank Account	372	390
	372	390

15. Creditors

	31 March 2024	31 March 2023
	£000	£000
Amounts falling due within one year:		
Trade creditors	153	83
Other creditors	16	12
Deferred Income	2	65
	171	160

16. Analysis of charitable funds

a) Endowment funds

i) Analysis of endowment fund movements

ii) Details of permanent endowment funds

	31 March 2024	31 March 2023
	£000	£000
A General Purposes Fund	26	26
B W.H.Fowler Trust	14	14
C Nell Phoenix Fund	42	42
	82	82

Name of permanent endowment	Description of the nature and purpose of each permanent endowment
A General Purposes Fund	To earn interest for the benefit of the non designated fund of the RWT Charity
B W.H.Fowler Trust	To earn interest for the benefit of the designated Maternity & Gynaecology fund within the Obstetrics and Gynaecology area
C Nell Phoenix Fund	To earn interest for the benefit of the restricted fund which is to provide musical entertainment for nursing staff

b) Restricted funds

i) Analysis of restricted fund movements

Name of fund	31 March 2023	Income	Expenditure	Transfers	Gains & losses	31 March 2024
	£000	£000	£000	£000	£000	£000
A Joan Jones	94	5	(4)	-	4	99
B Edith Mary Jeavons	4	-	-	-	-	4
C Nell Phoenix Fund	30	3	(3)	-	4	34
D Cystic Fibrosis Funding	2	-	-	-	-	2
E Sheila Whiting Legacy	64	3	(2)	-	3	68
F Marjorie Ferguson Legacy	1	-	-	-	-	1
G CCH General Purpose - Legacies	18	1	(1)	-	1	19
H Rotary Dowding	212	10	(9)	-	10	223
I Millicent Jessica Dwight - Legacy	16	1	(1)	-	1	17
J Swan Fund	9	4	-	-	1	14
K Cancer Centre Fund	27	1	(1)	-	1	28
L Kenneth Arthur Hollins - CCH Dialysis Centre	77	4	(3)	-	4	82
N New Cross General Purposes - Legacies	194	147	(9)	(252)	4	84
O RWT Singers	7	7	(8)	-	-	6
P Individual funds < £500	1	-	-	-	-	1
Q Arts & Heritage Fund	28	37	(61)	-	-	4
R NHS Charities Together	68	155	(123)	-	4	104
	-					
	852	378	(225)	(252)	37	790

Restricted funds explanation (continued)

Name of fund		Description of the nature and purpose of each fund
A	Joan Jones	to provide medical equipment to the Renal, Oncology, Vascular and Cardiac Units
B	Edith Mary Jeavons	to provide medical equipment to RWT
C	Nell Phoenix Fund	to provide musical entertainment for nursing staff
D	Cystic Fibrosis Funding	to support patients and their families who suffer with Cystic Fibrosis
E	Sheila Whiting Legacy	to support Rheumatology services at Cannock Hospital
F	Marjorie Ferguson Legacy	to support the services provided at the Rehabilitation Day Unit at Cannock Hospital
G	CCH General Purpose - Legacies	to support services at Cannock Hospital
H	Rotary Dowding	to support services at Cannock Hospital
I	Millicent Jessica Dwight Legacy	to provide equipment to RWT
J	Swan Fund	to support End-of-Life Care with in the Trust
K	Cancer Centre Fund	to provide a top class facility for cancer patients in the area
L	Kenneth Arthur Hollins - CCH Dialysis Centre	to provide support within the Cannock Hospital Dialysis Centre
M	Special Fund for Nano Bubble Pump	for the provision of a Nano Bubble Pump
N	New Cross General Purposes - Legacies	to support services at New Cross Hospital
O	RWT Singers (Choir)	to improve staff morale and enhance patient and visitor experience around the Trust
P	Individual Funds <£500	Lindsay Clift Memorial Fund is to support patient safety by way of training or providing vital monitoring equipment. Calabar Wolverhampton VISION 2020 Link is to support staff training with links to other countries, Arts in Health Trust Fund is to support delivery of the Trust's Arts In Health Programme
Q	Arts & Heritage	to provide additional resources that contribute to and enhance the healing environment, therapeutic art activities for patients, their families and staff and to record the history of and the advancements of healthcare at RWT.
R	NHS Charities Together	to provide support to patients and staff using funds from NHS Charities Together

c) Unrestricted funds

i) Analysis of unrestricted funds movements

	31 March 2023	Income	Expenditure	Transfers	Gains & losses	31 March 2024
	£000	£000	£000	£000	£000	£000
A Anaesthetics	70	9	(11)	-	3	71
B Medical Directorate	277	123	(112)	(2)	13	299
C Haematology and Oncology	380	41	(157)	-	13	277
D Cardiac Services	288	63	(58)	-	12	305
E Renal Unit	42	6	(6)	-	2	44
F Obstetrics & Gynaecology	63	4	(25)	-	3	45
G Ophthalmology	80	7	(10)	-	3	80
H Orthopaedics	92	20	(30)	-	4	86
I Paediatrics	177	46	(69)	(1)	7	160
J Surgical Directorate	72	31	(15)	-	4	92
K Clinical Support	3	-	(1)	-	-	2
L Wolverhampton Medical Institute	8	-	(8)	-	-	0
M Other Smaller Funds	82	8	(13)	-	3	80
N Community Work	5	1	(1)	3	-	8
O Research Funds	66	2	(15)	-	2	55
	1,705	361	(531)	-	69	1,604
Non-designated funds						
P General Purposes Funds	86	78	(85)	252	15	346
	1,791	439	(616)	252	84	1,950

Trustees have exercised their discretion to set aside part of the unrestricted funds for designated purposes. The designation applied has taken account the wishes expressed by the donor when the funds were given. Designated funds remain unrestricted as Trustees can remove the designation at any time.

Within General Purposes, a new fund was set up in year, RWT Legacies, for those legacies gifted to the Charity for which there are no restrictions attached. The transfer of £251,671 in year from the restricted fund of New Cross General Purpose Legacies is in respect of any remaining legacies, for which there were no conditions attached when they were gifted.

17. Related party transactions

During the year, neither the Corporate Trustee nor members of the key management staff or parties related to it has undertaken any material transactions with or received any remuneration or expenses from The Royal Wolverhampton NHS Trust Charity. As part of the normal course of business, The Charity has made payments totalling £565,000 (2022/23 £835,013) to The Royal Wolverhampton NHS Trust as Corporate Trustee of the Charity. In 2023/24 an amount of £152,596 (2022/23 £83,212) was owing to the Trust at 31 March 2024. The total income of the Corporate Trustee in the year ended 31 March 2024 amounted to £940,686,000 (2022/23 £899,891,000) and the adjusted retained deficit amounted to £26,657,000 (2022/23 retained surplus of £90,000).

18. Commitments

The Charity has commitments totalling £240,404 at 31 March 2024 (2022/23 £45,195) arising from requisitions placed for which the relevant goods and services have not been received. These commitments relate to unrestricted and restricted funds.

19 Donations in kind

Donations in kind have been made to aid the Charity's mission to support The Royal Wolverhampton NHS Trust. Donations to the value of £18,001 (2022/23 £24,472) have been included in the accounts this year for items of clothing, toys for the children's ward, knitted blankets, sensory items and other kind gifts that help make the patients' stay better. All of these items will be used for some time to come. We also received several offers of kindness for the patients and staff of the Trust and the wider community for items such as care packages, hand creams, lip balms, food and drink. The value of these items was estimated at £33,623 (2022/23 £12,034).

When received, all items were distributed as soon as possible and shared with the whole of the Trust.

